



**Commercial Credit Group, Inc (Mark Wenzel)**  
525 N Tryon Street, Charlotte, NC 28202 USA  
(704) 414-2456

VIN: 5WKBE3634P1079572

**2023 OTHER FREEDOM 8.5X36 TTA4**

SPECIFICATIONS	
AXLE TYPE	TRI - F 6,000 LB / R 6,000 LB
FRAME	STEEL
SUSPENSION	SPRING
TIRE SIZE	F 235/80 16 / R 235/80/16
WHEELS	F STEEL / R STEEL
REAR D TYPE	DROP-CURTAIN
R DOOR (IN X IN)	89X91
INTERIOR H (IN)	96
EXTERIOR H (IN)	115
EXTERIOR W (IN)	93
EXTERIOR L (FT)	38.0
EXTERIOR COLOR	SILVER



BRAKES	
<b>LEFT REAR 1</b>	<b>RIGHT REAR 1</b>
COVERED	COVERED
<b>LEFT REAR 2</b>	<b>RIGHT REAR 2</b>
COVERED	COVERED
<b>LEFT REAR 3</b>	<b>RIGHT REAR 3</b>
COVERED	COVERED

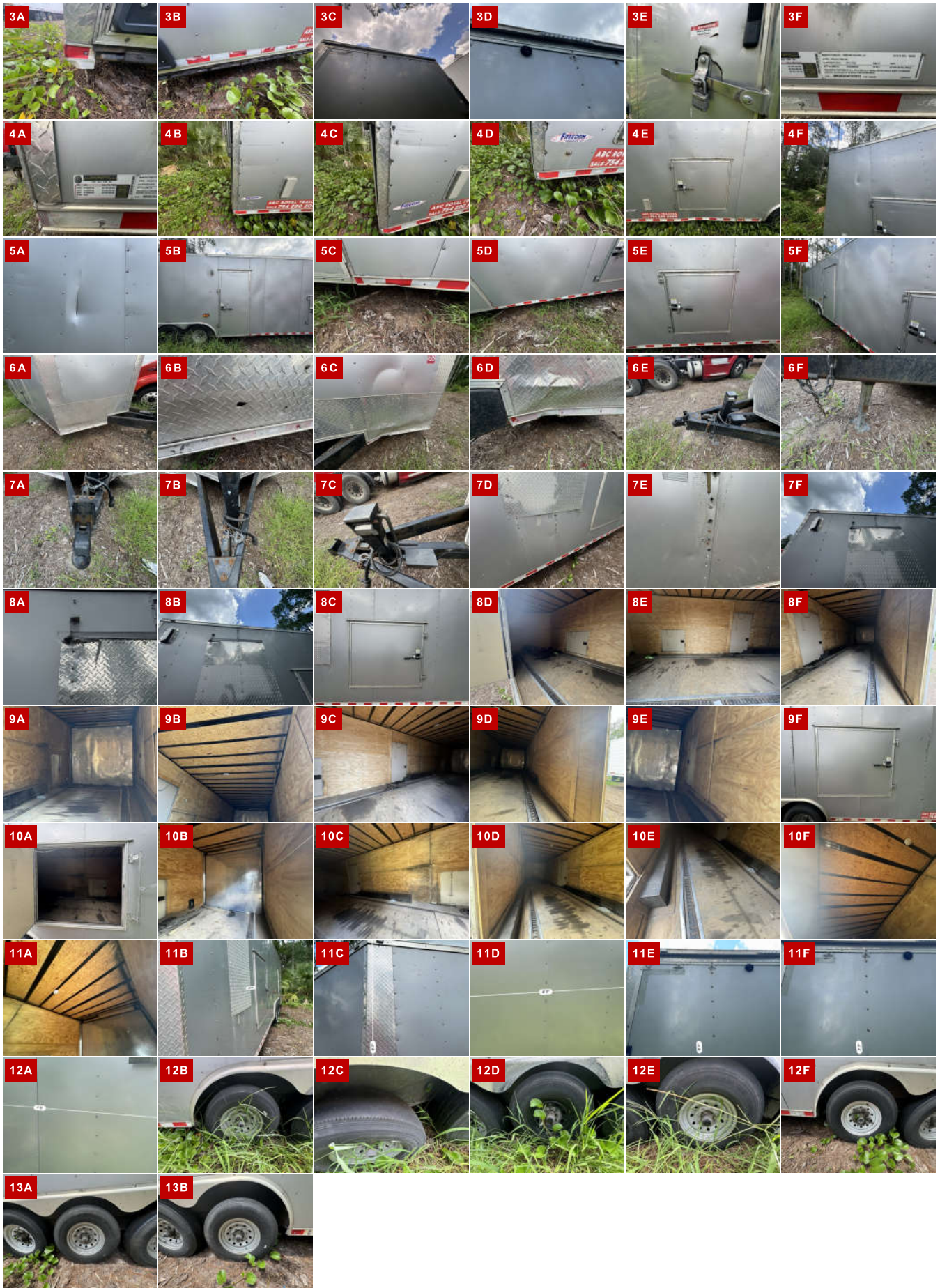
TIRES & WHEELS			
<b>LEFT OUTER 1</b>	<b>LEFT INNER 1</b>	<b>RIGHT INNER 1</b>	<b>RIGHT OUTER 1</b>
6 / 32	-	-	9 / 32
-	-	-	-
STEEL	-	-	STEEL
<b>LEFT OUTER 2</b>	<b>LEFT INNER 2</b>	<b>RIGHT INNER 2</b>	<b>RIGHT OUTER 2</b>
7 / 32	-	-	6 / 32
-	-	-	-
STEEL	-	-	STEEL
<b>LEFT OUTER 3</b>	<b>LEFT INNER 3</b>	<b>RIGHT INNER 3</b>	<b>RIGHT OUTER 3</b>
5 / 32	-	-	-
-	-	-	-
STEEL	-	-	STEEL
<b>FRONT TIRES: 235/80 16</b>		<b>REAR TIRES: 235/80/16</b>	

**ADDITIONAL TIRE DETAIL**  
 RLO1 AND RRO2 TIRE MADE BY ONYX. RR1 TIRE MADE BY TRAILER KING. RL2 TIRE MADE BY FREESTAR. RL3 TIRE MADE BY PATH RAIDER. RR3 TIRE MADE BY GERMAN X

WEAR & TEAR DETAIL	
<b>EXTERIOR BOX</b>	DENTED ON THE FRONT D/S. D/S REAR PANEL IS LOOSE. SCRAPED AND DENTED ON THE P/S. DOOR COVERED UP WITH DIAMOND PLATE ON D/S. LARGE CRACK IN THE P/S WALL. MULTIPLE DOOR HANDLES ARE DAMAGED. RIVETS MISSING ON BOTH SIDES
<b>INTERIOR BOX</b>	FLOOR IS STAINED, FRONT WALL IS DENTED. LEAKING ALONG THE D/S REAR
<b>TIRES</b>	6 TIRES LESS THAN 10/32

**REPORT PHOTOS**





Condition report only. National Inspection Services does not guarantee mechanical reliability.

101 W. Shrader St. Liberty, MO 64068  
[www.nationalinspect.com](http://www.nationalinspect.com)