



**Commercial Credit Group, Inc (Mark Wenzel)**  
525 N Tryon Street, Charlotte, NC 28202 USA  
(704) 414-2456

VIN: 1HT MMMML2HH654774

**2017 INTERNATIONAL 4300**

SPECIFICATIONS	
MILEAGE	331,970 / 334,972 (ECM)
ENGINE HOURS	31,783
ENGINE	CUMMINS ISB 6.7L 250 HP
ENG BRAKE	NO
ENG SERIAL	78949723
FUEL / TANKS	DIESEL - 1 ALUM 70 GAL TOTAL
TRANSMISSION	ALLISON 2500 HS 6 SPD AUTO
DRIVE OPTS	POWER STEERING, OVERDRIVE, CRUISE
REAR END	MERITOR 5.29
AXLE TYPE	SINGLE - F 10,000 LB / R 19,000 LB
GVWR	25,999
FRAME	STEEL
SUSPENSION	AIR RIDE
WHEELBASE	270"
TIRE SIZE	295/75R22.5
WHEELS	F STEEL / R STEEL
REAR D TYPE	ROLL-UP
LIFT GATE MAKE	MAXON
LIFT GATE CAPAC (LBS)	2500
INTERIOR H (IN)	97
EXTERIOR W (IN)	102
EXTERIOR L (FT)	26.0
AIR COND	YES, OPERATIONAL
INTERIOR COLOR	GRAY
HIGH BACK SEATS	DUAL
PASSENGER SEAT	STATIONARY
EXTERIOR COLOR	WHITE
BUMPER	PAINTED



BRAKES	
LEFT FRONT	RIGHT FRONT
20	20
LEFT REAR 1	RIGHT REAR 1
18	18

TIRES & WHEELS			
LEFT FRONT		RIGHT FRONT	
11 / 32 STEEL		13 / 32 STEEL	
LEFT OUTER 1	LEFT INNER 1	RIGHT INNER 1	RIGHT OUTER 1
20 / 32 - STEEL	15 / 32 - STEEL	14 / 32 - STEEL	18 / 32 - STEEL
FRONT TIRES: 295/75R22.5		REAR TIRES: 295/75R22.5	

**GENERAL OBSERVATIONS**

OIL MILKY?	NO	LIGHTS WORK?	YES - ALL
OIL LEAKS?	YES	WIPERS WORK?	YES
WATER LEAKS?	NO	GAUGES WORK?	SEE NOTES
OIL IN COOLANT?	NO	AIR HORN WORKS?	NA
CLUTCH PLAY?	NA	CITY HORN WORKS?	YES
STARTS?	YES		
DRIVES	SEE NOTES		

**ADDITIONAL OBSERVATIONS**

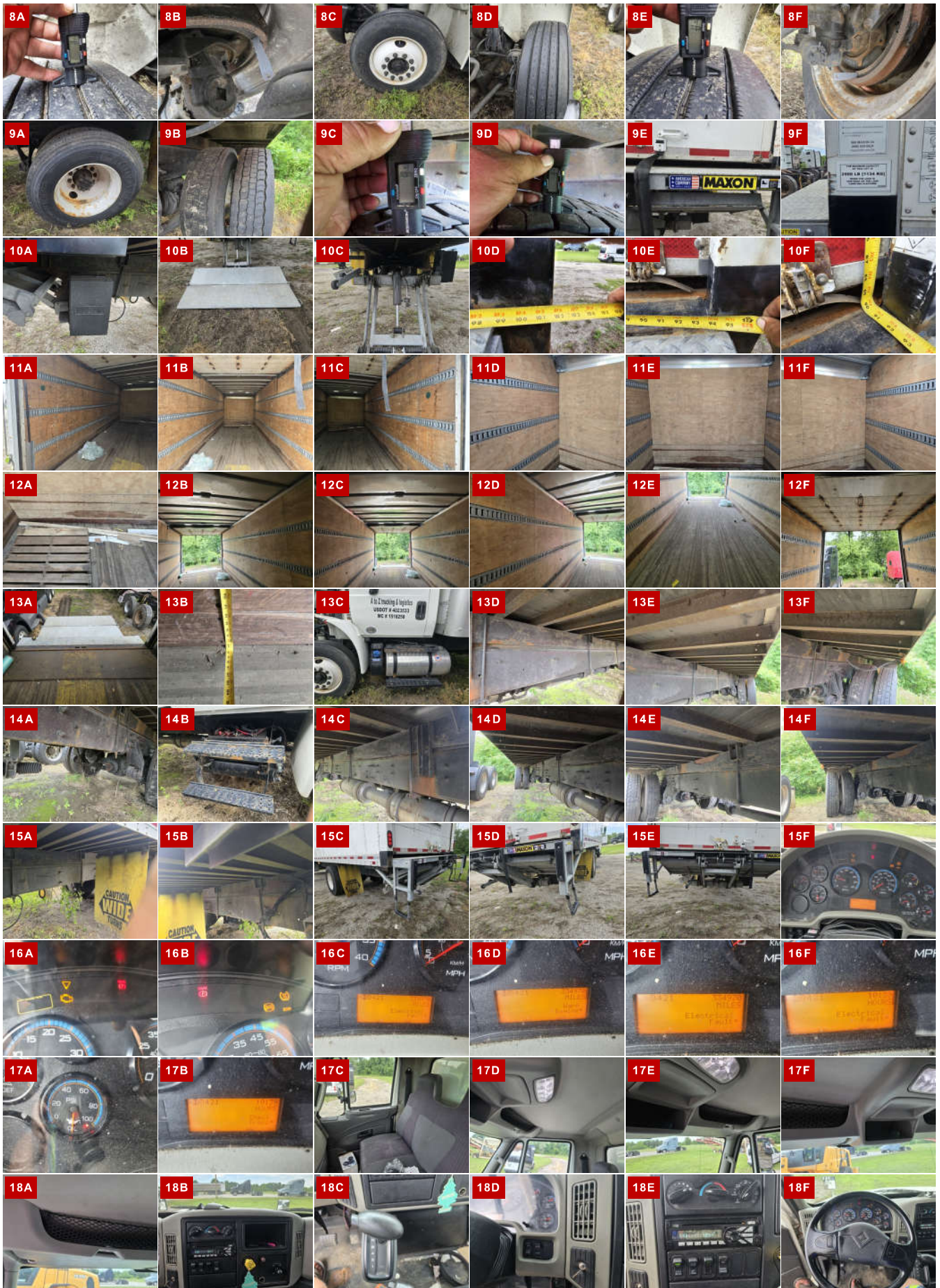
ENGINE WOULD NOT REV HIGH ENOUGH TO SNAP TEST DPF. ENGINE DERATE IS ACTIVE. OIL LEAKING AT LOWER RIGHT SIDE OF ENGINE / OIL PAN AND AT REAR SEAL AREA.

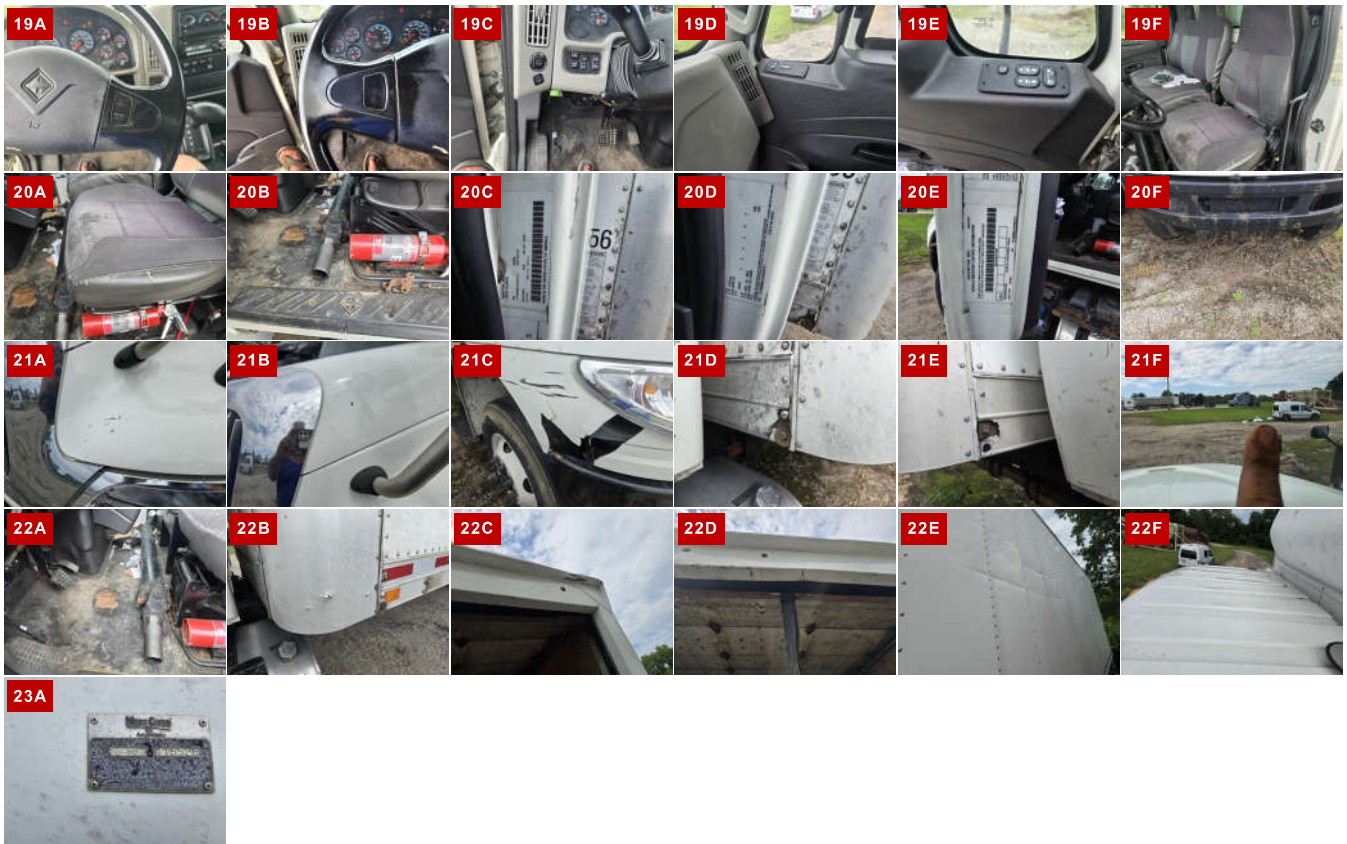
**WEAR & TEAR DETAIL**

<b>DIAGNOSTICS</b>	ENGINE, CAUTION, ABS AND TC LIGHTS ARE ON. 10 ACTIVE / 13 INACTIVE FAULTS DETECTED (SEE ECM REPORT)
<b>INTERIOR</b>	SURFACES AND UPHOLSTERY ARE DIRTY
<b>GAUGE</b>	OIL PRESSURE GAUGE NOT WORKING
<b>SEATS</b>	UPHOLSTERY WORN / STAINED ON BOTH SIDES, SMALL TEAR AT DRIVER SEAT
<b>FLOOR</b>	DRIVER SIDE MAT WORN THROUGH
<b>CAB ROOF</b>	MULTIPLE DENTS
<b>BOX</b>	SCRATCHES / DENTS AT WALL PANELING, FRONT LOWER RAIL DAMAGED AT BOTH ENDS, HOLES FORMING AT BOTTOM OF LEFT FRONT CORNER POST, UPPER REAR RAIL DENTED, LEFT AND RIGHT SIDE CRACKED BY THE TAILLIGHTS
<b>BUMPER</b>	SPOTS OF RUST FORMING
<b>HOOD</b>	CHIPPED AND RIGHT FENDER DAMAGED / BROKEN
<b>WINDSHIELD</b>	CHIPPED GLASS
<b>STEERING WHEEL</b>	SURFACES WORN AND HAS STICK RESIDUE
<b>ROLL DOOR</b>	DIFFICULT TO OPEN,
<b>BATTERIES</b>	CAN JUMP THE UNIT BUT WILL NOT TAKE A CHARGE
<b>DRIVE SHAFT</b>	DRIVE SHAFT UNMOUNTED FOR TOWING

**REPORT PHOTOS**







REPORT DOCUMENTS

Condition report only. National Inspection Services does not guarantee mechanical reliability.

© National Inspection Services  
101 W. Shrader St. Liberty, MO 64068  
[www.nationalinspect.com](http://www.nationalinspect.com)