



**Commercial Credit Group, Inc (Mark Wenzel)**  
525 N Tryon Street, Charlotte, NC 28202 USA  
(704) 414-2456

VIN: 3ALACWDT7HDHV4042

**2017 FREIGHTLINER M2**

SPECIFICATIONS	
MILEAGE	183,398
ENGINE	CUMMINS 6.7 220 HP
ENG BRAKE	NO
ENG SERIAL	58650000
FUEL / TANKS	DIESEL - 1 ALUM 100 GAL TOTAL
TRANSMISSION	ALLISON 2200 RDS 6 SPD AUTO
DRIVE OPTS	POWER STEERING, OVERDRIVE, CRUISE
REAR END	DETROIT 5.56
AXLE TYPE	SINGLE - F 10,000 LB / R 19,000 LB
GVWR	26,000
FRAME	STEEL
SUSPENSION	AIR RIDE
WHEELBASE	270"
TIRE SIZE	11R22.5
WHEELS	F STEEL / R STEEL
REAR D TYPE	ROLL-UP
LIFT GATE MAKE	WALTCO
LIFT GATE MODEL	HL F40
LIFT GATE CAPAC (LBS)	3000
INTERIOR H (IN)	103
EXTERIOR W (IN)	102
EXTERIOR L (FT)	26.0
AIR COND	YES
INTERIOR COLOR	GRAY
HIGH BACK SEATS	DRIVER SIDE ONLY
PASSENGER SEAT	STATIONARY
EXTERIOR COLOR	YELLOW
BUMPER	PAINTED
EXTERIOR OPTS	HEATED MIRRORS



BRAKES	
<b>LEFT FRONT</b>	<b>RIGHT FRONT</b>
COVERED	COVERED
<b>LEFT REAR 1</b>	<b>RIGHT REAR 1</b>
COVERED	COVERED

TIRES & WHEELS			
<b>LEFT FRONT</b>		<b>RIGHT FRONT</b>	
21 / 32 STEEL		21 / 32 STEEL	
<b>LEFT OUTER 1</b>	<b>LEFT INNER 1</b>	<b>RIGHT INNER 1</b>	<b>RIGHT OUTER 1</b>
27 / 32 - STEEL	27 / 32 - STEEL	13 / 32 - STEEL	12 / 32 - STEEL
<b>FRONT TIRES: 11R22.5</b>		<b>REAR TIRES: 11R22.5</b>	

**GENERAL OBSERVATIONS**

<b>OIL MILKY?</b>	NO	<b>LIGHTS WORK?</b>	SEE NOTES
<b>OIL LEAKS?</b>	YES	<b>WIPERS WORK?</b>	SEE NOTES
<b>WATER LEAKS?</b>	NO	<b>GAUGES WORK?</b>	SEE NOTES
<b>OIL IN COOLANT?</b>	NO	<b>AIR HORN WORKS?</b>	SEE NOTES
<b>CLUTCH PLAY?</b>	NA	<b>CITY HORN WORKS?</b>	SEE NOTES
<b>STARTS?</b>	SEE NOTES		
<b>DRIVES</b>	SEE NOTES		

**ADDITIONAL OBSERVATIONS**

KEYS NOT AVAILABLE W/ VEHICLE. NO POWER AVAILABLE. UNABLE TO START ENGINE OR TEST ACCESSORY SYSTEMS. COOLANT LEVEL IS VERY LOW. OIL LEAKING AT BOTTOM OF ENGINE (OIL PAN) FRONT TO REAR SEAL AREA.

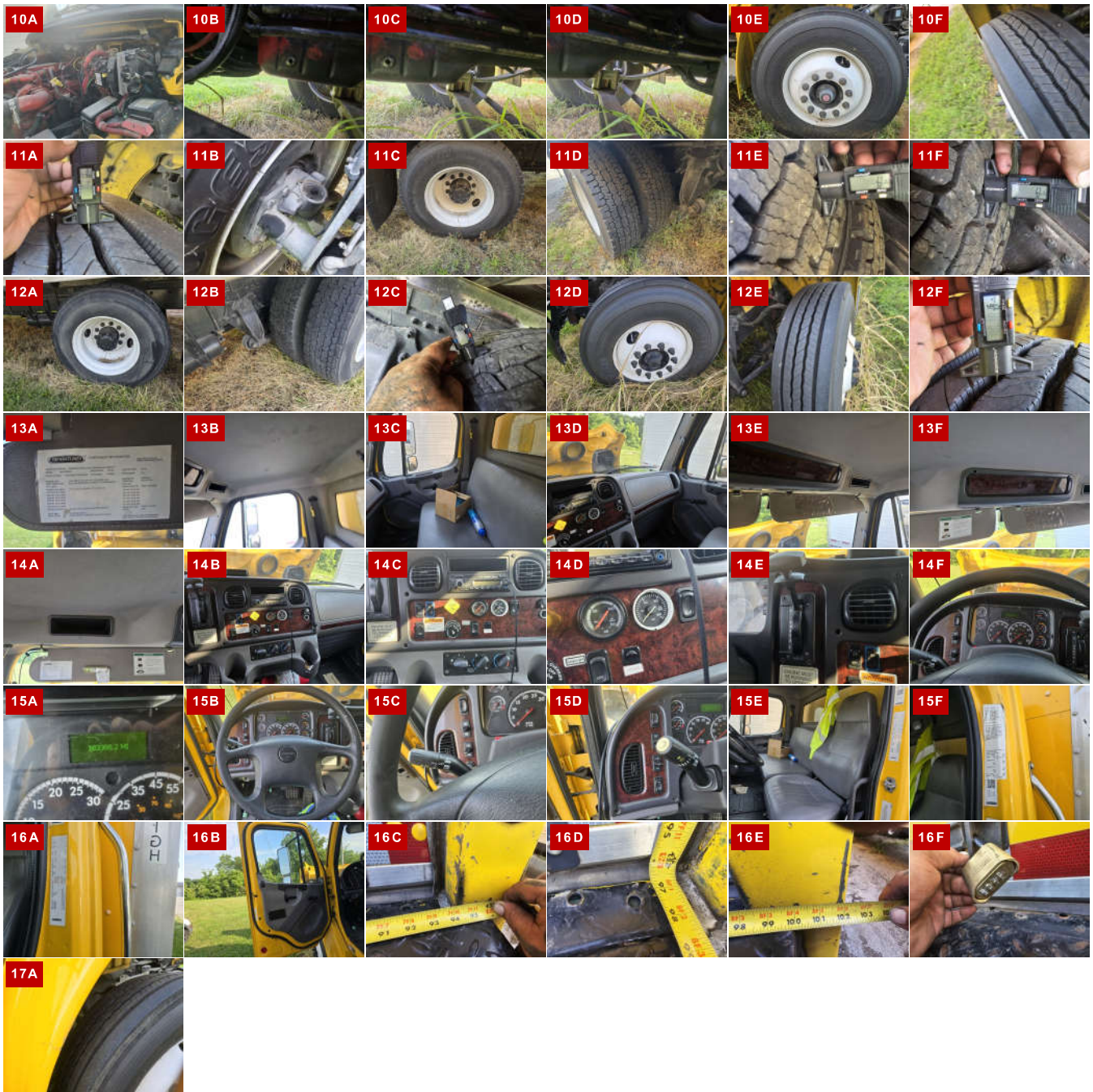
LOW. OIL LEAKING AT BOTTOM OF ENGINE / OIL PAN, FRONT TO REAR SEAL AREA.

### WEAR & TEAR DETAIL

<b>KEYS</b>	NOT PRESENT W/ VEHICLE
<b>GAUGES</b>	AIR GAUGE MISSING COVER AT CENTER OF DASH, MAIN CLUSTER COVER HAS CRACK AT TOP
<b>STEERING WHEEL</b>	SURFACES ARE WORN
<b>FENDER EXTENSION</b>	RIGHT SIDE CRACKED
<b>BUMPER</b>	PAINT PEELING RIGHT END IS BENT IN
<b>BOX</b>	PAINT SCRATCHES ON BOTH SIDES, ROLL DOOR HAS COMBINATION LOCK ON IT, UNABLE TO OPEN DOOR

### REPORT PHOTOS





Condition report only. National Inspection Services does not guarantee mechanical reliability.

© National Inspection Services  
 101 W. Shrader St. Liberty, MO 64068  
[www.nationalinspect.com](http://www.nationalinspect.com)