



Commercial Credit Group, Inc (Mark Wenzel)
525 N Tryon Street, Charlotte, NC 28202 USA
(704) 414-2456

VIN: 1FUJGLDR4HLHS8937
PO #: 14943

2017 FREIGHTLINER CASCADIA 125

SPECIFICATIONS	
ENGINE	DETROIT DD15 14.8L 455 HP
ENG SERIAL	472910S0457788
FUEL / TANKS	DIESEL - 2 ALUM 200 GAL TOTAL
EXHAUST	SINGLE
TRANSMISSION	DETROIT DT12-OA-1650 HD 12 SPD AUTO
DRIVE OPTS	POWER STEERING, OVERDRIVE, CRUISE
WET LINE	YES
REAR END	MERITOR 3.08
AXLE TYPE	TANDEM - F 13,220 LB / R 40,000 LB
GVWR	53,220
FRAME	STEEL
SUSPENSION	AIR RIDE
WHEELBASE	228"
TIRE SIZE	11R 22.5
WHEELS	F STEEL / R STEEL
WHEEL 5TH	AIR SLIDE
AIR COND	YES
SLEEPER	72"
DUAL BUNK	YES
INTERIOR COLOR	GRAY
RADIO	AM/FM
MIRRORS	DUAL POWER
HIGH BACK SEATS	DUAL
PASSENGER SEAT	AIR RIDE
EXTERIOR COLOR	WHITE
BUMPER	PLASTIC
EXTERIOR OPTS	FULL FAIRINGS
COLLISION AVOIDANCE?	YES



NOTES / DESCRIPTION

NO KEYS. NO KEYS WERE AVAILABLE FOR THIS UNIT VEHICLE COULD NOT BE CRANKED OR ELECTRONICS COULD NOT BE CHECKED.

BRAKES	
LEFT FRONT	RIGHT FRONT
13	15
LEFT REAR 1	RIGHT REAR 1
22	20
LEFT REAR 2	RIGHT REAR 2
22	18

TIRES & WHEELS			
LEFT FRONT		RIGHT FRONT	
14 / 32 BRIDGESTONE ALUMINUM		15 / 32 BRIDGESTONE ALUMINUM	
LEFT OUTER 1	LEFT INNER 1	RIGHT INNER 1	RIGHT OUTER 1
5 / 32 BRIDGESTONE ALUMINUM	5 / 32 BRIDGESTONE ALUMINUM	10 / 32 MICHELIN ALUMINUM	18 / 32 MICHELIN ALUMINUM
LEFT OUTER 2	LEFT INNER 2	RIGHT INNER 2	RIGHT OUTER 2
5 / 32 CONTINENTAL ALUMINUM	1 / 32 CONTINENTAL ALUMINUM	11 / 32 CONTINENTAL ALUMINUM	10 / 32 CONTINENTAL ALUMINUM
FRONT TIRES: 11R 22.5		REAR TIRES: 11R 22.5	

GENERAL OBSERVATIONS

OIL MILKY?	NA	LIGHTS WORK?	NA
OIL LEAKS?	YES	WIPERS WORK?	NA
WATER LEAKS?	NA	GAUGES WORK?	NA
OIL IN COOLANT ?	NA	AIR HORN WORKS?	NA
CLUTCH PLAY?	NA	CITY HORN WORKS?	NA
STARTS?	NA		
DRIVES	NA		

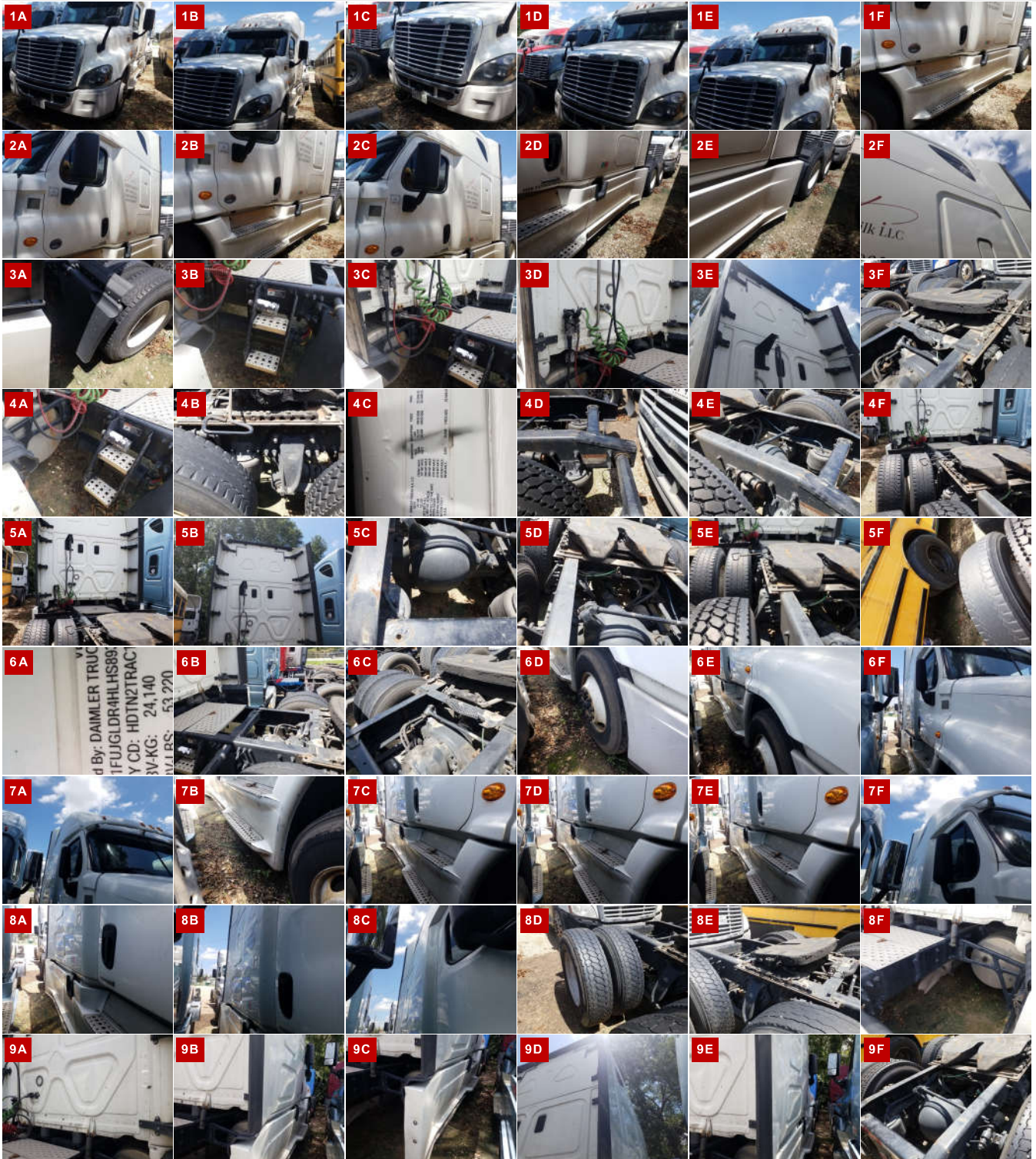
ADDITIONAL OBSERVATIONS

OIL PAN IS LEAKING OIL. NO KEYS WERE AVAILABLE FOR THIS UNIT VEHICLE COULD NOT BE CRANKED OR ELECTRONICS COULD NOT BE CHECKED.

WEAR & TEAR DETAIL

GAUGES	LENS CRACKED
NO KEYS	NO KEYS WERE AVAILABLE FOR THIS UNIT VEHICLE COULD NOT BE CRANKED OR ELECTRONICS COULD NOT BE CHECKED.
CAB	INTERIOR AND EXTERIOR NEEDS TO BE CLEANED.
SEATS	UPHOLSTERY STAINED AND WORN.
TIRES	4 TIRES WORN BELOW 10/32.

REPORT PHOTOS





Condition report only. National Inspection Services does not guarantee mechanical reliability.

© National Inspection Services
101 W. Shrader St. Liberty, MO 64068
www.nationalinspect.com