



Commercial Credit Group, Inc (Mark Wenzel)  
525 N Tryon Street, Charlotte, NC 28202 USA  
(704) 414-2456

VIN: 4V4NC9EHXJN904270

2018 VOLVO VNL64

SPECIFICATIONS	
ENGINE	VOLVO D13 12.8L 425 HP
ENG SERIAL	1192596
FUEL / TANKS	DIESEL - 2 ALUM 200 GAL TOTAL
EXHAUST	HORIZONTAL
TRANSMISSION	VOLVO ATO-2612F 12 SPD AUTO
DRIVE OPTS	POWER STEERING, OVERDRIVE, CRUISE
REAR END	MERITOR 2.64
AXLE TYPE	TANDEM - F 13,200 LB / R 38,000 LB
GVWR	51,200
FRAME	STEEL
SUSPENSION	AIR RIDE
TIRE SIZE	295 75R 22.5
WHEELS	F ALUMINUM / R ALUMINUM
WHEEL 5TH	AIR SLIDE
AIR COND	YES
AUX POWER UNIT?	NO
SLEEPER	77"
DUAL BUNK	YES
INTERIOR COLOR	TAN/GRAY
RADIO	AM/FM, OPERATIONAL
MIRRORS	DUAL POWER
HIGH BACK SEATS	DUAL
PASSENGER SEAT	AIR RIDE
EXTERIOR COLOR	RED
BUMPER	PAINTED
EXTERIOR OPTS	HEATED MIRRORS, FULL FAIRINGS



BRAKES	
<b>LEFT FRONT</b>	<b>RIGHT FRONT</b>
75%	75%
<b>LEFT REAR 1</b>	<b>RIGHT REAR 1</b>
25%	25%
<b>LEFT REAR 2</b>	<b>RIGHT REAR 2</b>
25%	25%
ADDITIONAL BRAKE DETAIL	
MERITOR DISC TYPE	

TIRES & WHEELS			
<b>LEFT FRONT</b>		<b>RIGHT FRONT</b>	
4 / 32 GOODYEAR ALUMINUM		9 / 32 ALUMINUM	
<b>LEFT OUTER 1</b>	<b>LEFT INNER 1</b>	<b>RIGHT INNER 1</b>	<b>RIGHT OUTER 1</b>
17 / 32 - ALUMINUM	17 / 32 - ALUMINUM	19 / 32 - ALUMINUM	17 / 32 - ALUMINUM
<b>LEFT OUTER 2</b>	<b>LEFT INNER 2</b>	<b>RIGHT INNER 2</b>	<b>RIGHT OUTER 2</b>
16 / 32 - ALUMINUM	14 / 32 - ALUMINUM	16 / 32 - ALUMINUM	16 / 32 - ALUMINUM
<b>FRONT TIRES: 295 75R 22.5</b>		<b>REAR TIRES: 295 75R 22.5</b>	

ADDITIONAL TIRE DETAIL
MIXED BRANDS - IRONMAN AND WELLPLUS

GENERAL OBSERVATIONS

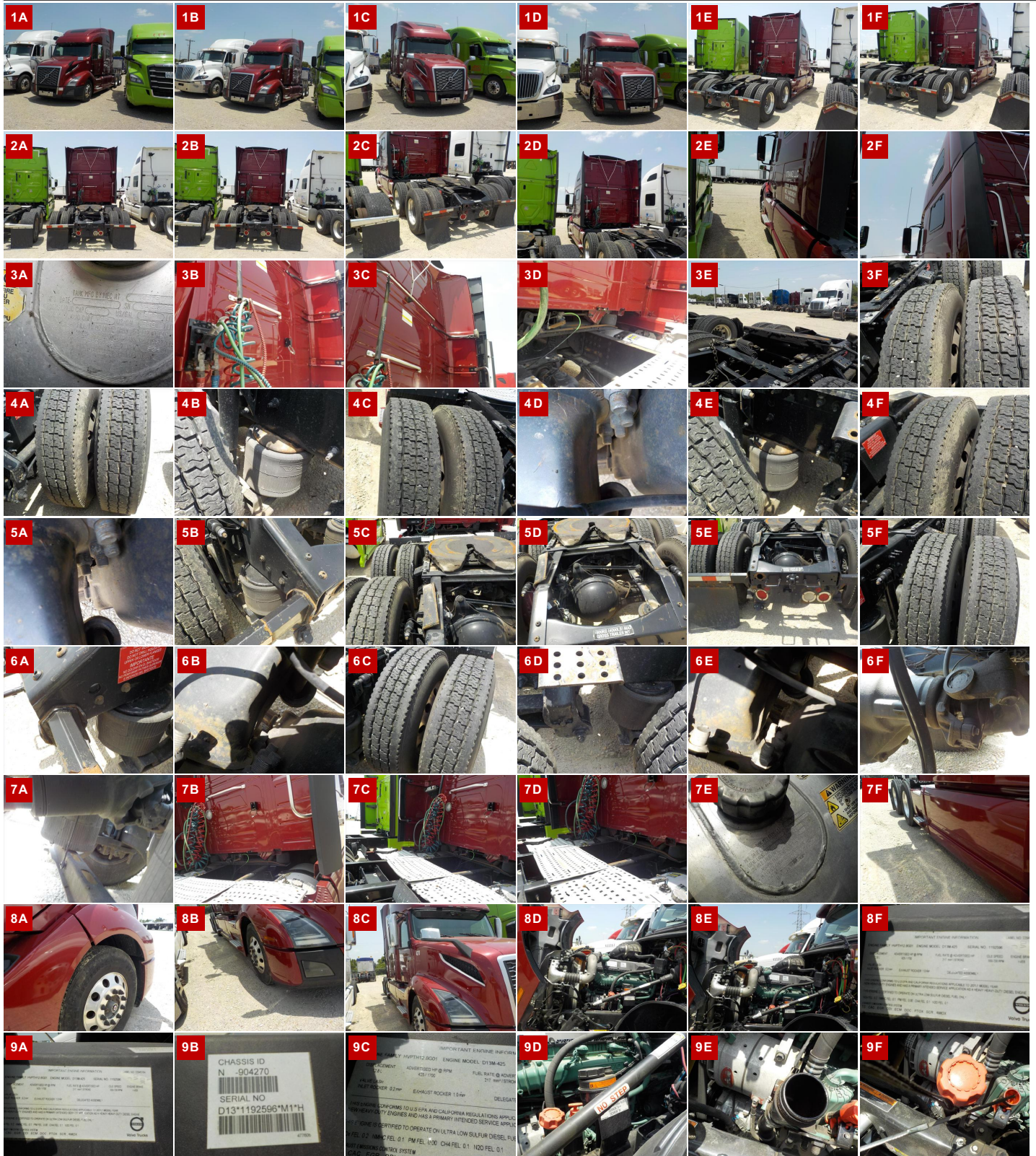
<b>OIL MILKY?</b>	NO	<b>LIGHTS WORK?</b>	YES - ALL
<b>OIL LEAKS?</b>	NO	<b>WIPERS WORK?</b>	SEE NOTES
<b>WATER LEAKS?</b>	NO	<b>GAUGES WORK?</b>	SEE NOTES
<b>OIL IN COOLANT?</b>	NO	<b>AIR HORN WORKS?</b>	SEE NOTES
<b>CLUTCH PLAY?</b>	NA	<b>CITY HORN WORKS?</b>	YES
<b>STARTS?</b>	SEE NOTES		

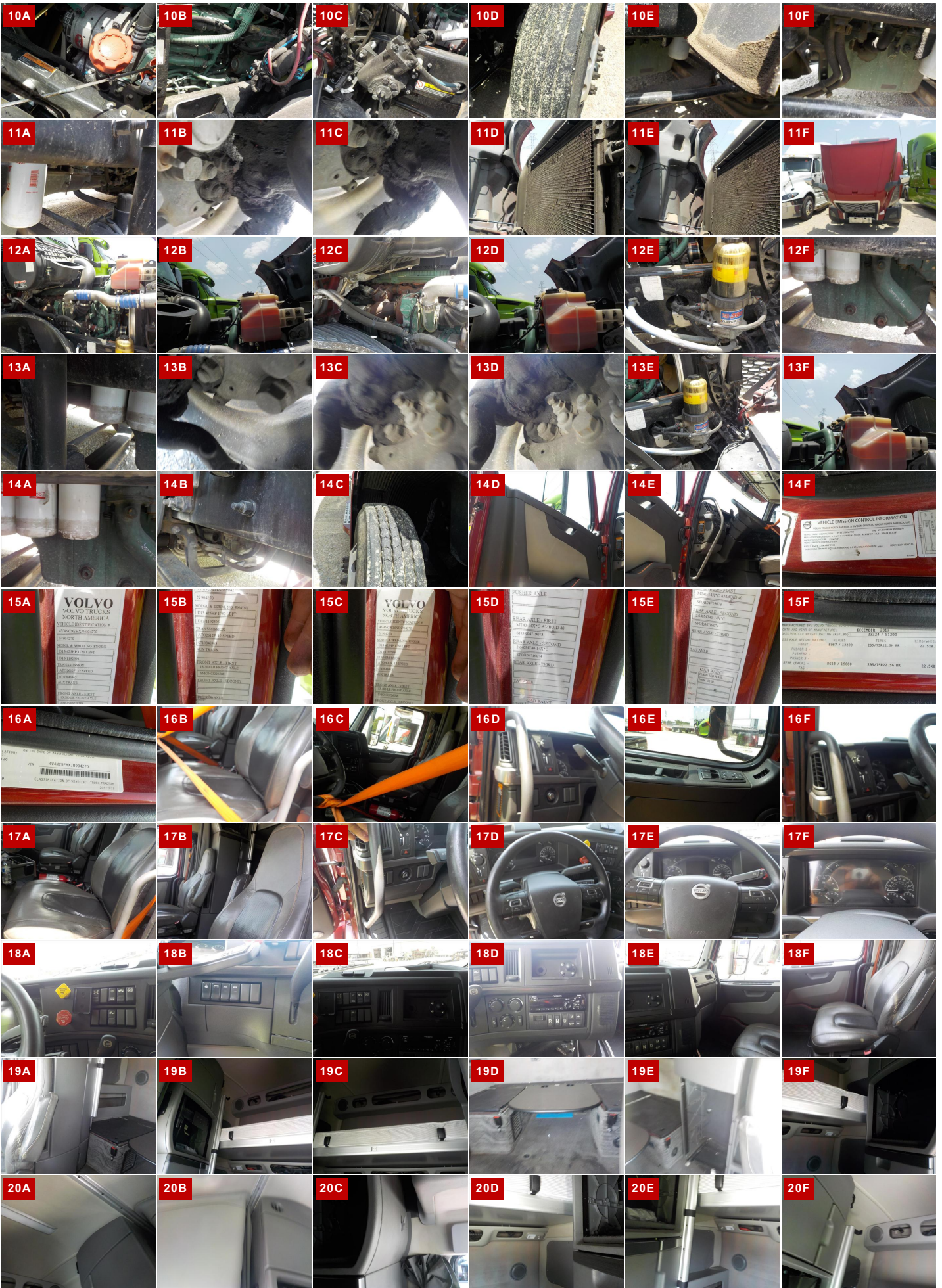
DRIVES	SEE NOTES
--------	-----------

**WEAR & TEAR DETAIL**

KEYS	MISSING. UNABLE TO START - VEHICLE TOWED IN
PAINT	VARIOUS CHIPS AND LIGHT SCRATCHES
CAT WALK	PLATES BENT AND DENTED
SEATS	SHOWING SIGNS OF WEAR
TIRES	2 BELOW 10/32'S
SLEEPER	CUSHINS / UPHOLSTERY MISSING
FRAME	LEFT LIFT BENT

**REPORT PHOTOS**





10A

10B

10C

10D

10E

10F

11A

11B

11C

11D

11E

11F

12A

12B

12C

12D

12E

12F

13A

13B

13C

13D

13E

13F

14A

14B

14C

14D

14E

14F

15A

15B

15C

15D

15E

15F

16A

16B

16C

16D

16E

16F

17A

17B

17C

17D

17E

17F

18A

18B

18C

18D

18E

18F

19A

19B

19C

19D

19E

19F

20A

20B

20C

20D

20E

20F



Condition report only. National Inspection Services does not guarantee mechanical reliability.

© National Inspection Services  
101 W. Shrader St. Liberty, MO 64068  
[www.nationalinspect.com](http://www.nationalinspect.com)