



**Commercial Credit Group, Inc (Mark Wenzel)**  
525 N Tryon Street, Charlotte, NC 28202 USA  
(704) 414-2456

VIN: 3AKJGEDVXGDHP9021  
PO #: 15031

**2016 FREIGHTLINER CASCADIA 125 64ST**

SPECIFICATIONS	
MILEAGE	506,225 / 31,762 (ECM)
ENGINE HOURS	15,548
ENGINE	DETROIT DD13 12.8L 435 HP
ENG BRAKE	YES
ENG SERIAL	S0379896
FUEL / TANKS	DIESEL - 2 ALUM 180 GAL TOTAL
EXHAUST	HORIZONTAL
TRANSMISSION	EATON-FULLER FRO-15210C 10 SPD MANUAL
DRIVE OPTS	POWER STEERING, OVERDRIVE, CRUISE
REAR END	MERITOR 3.55
AXLE TYPE	TANDEM - F 12,000 LB / R 40,000 LB
GVWR	52,000
FRAME	STEEL
SUSPENSION	AIR RIDE
WHEELBASE	178"
TIRE SIZE	11R22.5
WHEELS	F STEEL / R STEEL
WHEEL 5TH	AIR SLIDE
AIR COND	YES, OPERATIONAL
INTERIOR COLOR	GRAY
RADIO	AM/FM, OPERATIONAL
MIRRORS	DUAL POWER
HIGH BACK SEATS	DUAL
PASSENGER SEAT	STATIONARY
EXTERIOR COLOR	RED
BUMPER	PLASTIC
EXTERIOR OPTS	HEATED MIRRORS, ROOF FAIRINGS



BRAKES	
<b>LEFT FRONT</b>	<b>RIGHT FRONT</b>
DISC	DISC
<b>LEFT REAR 1</b>	<b>RIGHT REAR 1</b>
DISC	DISC
<b>LEFT REAR 2</b>	<b>RIGHT REAR 2</b>
DISC	DISC

TIRES & WHEELS			
<b>LEFT FRONT</b>		<b>RIGHT FRONT</b>	
7 / 32 BRIDGESTONE STEEL		10 / 32 BRIDGESTONE STEEL	
<b>LEFT OUTER 1</b>	<b>LEFT INNER 1</b>	<b>RIGHT INNER 1</b>	<b>RIGHT OUTER 1</b>
8 / 32 - STEEL	8 / 32 - STEEL	25 / 32 - STEEL	25 / 32 - STEEL
<b>LEFT OUTER 2</b>	<b>LEFT INNER 2</b>	<b>RIGHT INNER 2</b>	<b>RIGHT OUTER 2</b>
15 / 32 - STEEL	14 / 32 - STEEL	14 / 32 - STEEL	15 / 32 - STEEL
<b>FRONT TIRES: 11R22.5</b>		<b>REAR TIRES: 11R22.5</b>	

**GENERAL OBSERVATIONS**

<b>OIL MILKY?</b>	NO	<b>LIGHTS WORK?</b>	YES - ALL
<b>OIL LEAKS?</b>	YES	<b>WIPERS WORK?</b>	YES
<b>WATER LEAKS?</b>	NO	<b>GAUGES WORK?</b>	YES - ALL
<b>OIL IN COOLANT ?</b>	NO	<b>AIR HORN WORKS ?</b>	YES
<b>CLUTCH PLAY?</b>	OK	<b>CITY HORN WORKS?</b>	YES
<b>STARTS?</b>	YES		
<b>DRIVES</b>	YES	<b>DIESEL PARTICULATE FILTER</b>	<b>PASS</b>

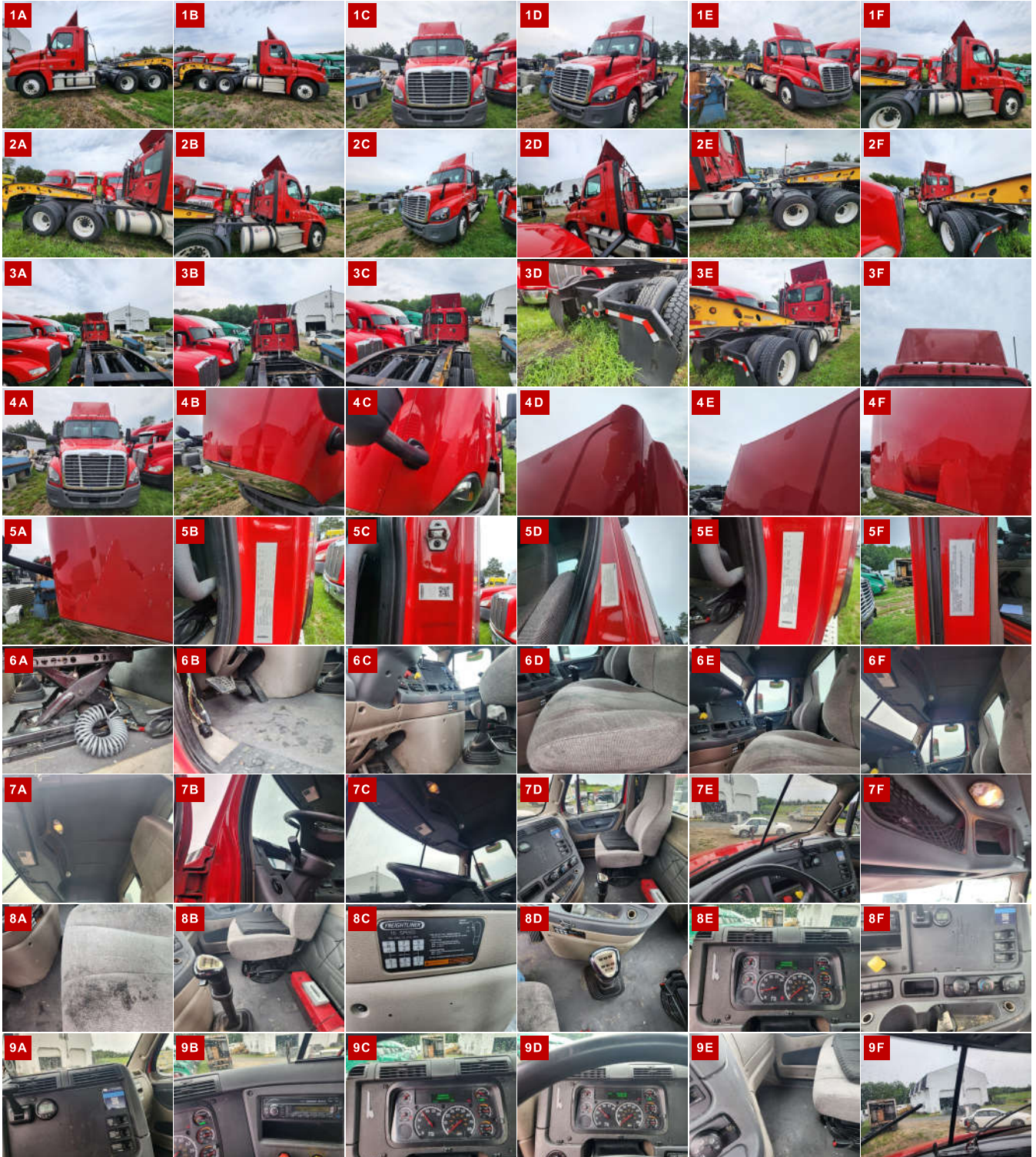
ADDITIONAL OBSERVATIONS

ECM MILEAGE DOES NOT MATCH THE INSTRUMENT CLUSTER

WEAR & TEAR DETAIL

DIAGNOSTICS	1 INACTIVE FAULTS DETECTED - (SEE ECM REPORT)
INSTRUMENT BEZEL	CRACKED
SEAT	BOTH ARE SHOWING WEAR
DOORS	ADHESIVE RESIDUE ON DOORS
DASH	ADHESIVE RESIDUE AND HOLE DRILLED IN CENTER PANEL
PAINT	CLEAR COAT PEELING
TIRES	3 TIRES UNDER 10/32

REPORT PHOTOS





Condition report only. National Inspection Services does not guarantee mechanical reliability.

© National Inspection Services  
101 W. Shrader St. Liberty, MO 64068  
[www.nationalinspect.com](http://www.nationalinspect.com)