



Commercial Credit Group, Inc (Mark Wenzel)
525 N Tryon Street, Charlotte, NC 28202 USA
(704) 414-2456

VIN: 1XPBDP9X7JD451666

2018 PETERBILT 579 T/A

| SPECIFICATIONS | |
|----------------------|------------------------------------|
| ENGINE | PACCAR MX13 12.9L 455 HP |
| ENG BRAKE | YES |
| FUEL / TANKS | DIESEL - 2 ALUM 200 GAL TOTAL |
| EXHAUST | HORIZONTAL |
| TRANSMISSION | EATON FAOM15810S-EP3 10 SPD AUTO |
| DRIVE OPTS | POWER STEERING, OVERDRIVE, CRUISE |
| REAR END | MERITOR 2.64 |
| AXLE TYPE | TANDEM - F 13,200 LB / R 38,000 LB |
| GVWR | 51,200 |
| FRAME | STEEL |
| SUSPENSION | AIR RIDE |
| TIRE SIZE | 295/75R22.5 |
| WHEELS | F ALUMINUM / R ALUMINUM |
| WHEEL 5TH | STATIONARY |
| AIR COND | YES |
| SLEEPER | 80" |
| DUAL BUNK | YES |
| INTERIOR COLOR | GREY |
| RADIO | AM/FM / CD |
| MIRRORS | DUAL POWER |
| HIGH BACK SEATS | DUAL |
| PASSENGER SEAT | AIR RIDE |
| EXTERIOR COLOR | RED |
| BUMPER | CHROME |
| EXTERIOR OPTS | HEATED MIRRORS, FULL FAIRINGS |
| COLLISION AVOIDANCE? | YES |



| BRAKES | |
|--------------------|---------------------|
| LEFT FRONT | RIGHT FRONT |
| 24 | 26 |
| LEFT REAR 1 | RIGHT REAR 1 |
| 28 | 28 |
| LEFT REAR 2 | RIGHT REAR 2 |
| 26 | 24 |

| TIRES & WHEELS | | | |
|---------------------------------|--------------------------|--------------------------------|--------------------------|
| LEFT FRONT | | RIGHT FRONT | |
| 14 / 32 ALUMINUM | | 12 / 32 ALUMINUM | |
| LEFT OUTER 1 | LEFT INNER 1 | RIGHT INNER 1 | RIGHT OUTER 1 |
| 13 / 32 - ALUMINUM | 11 / 32 - ALUMINUM | 11 / 32 - ALUMINUM | 12 / 32 - ALUMINUM |
| LEFT OUTER 2 | LEFT INNER 2 | RIGHT INNER 2 | RIGHT OUTER 2 |
| 10 / 32 - ALUMINUM | 9 / 32 - ALUMINUM | 8 / 32 - ALUMINUM | 6 / 32 - ALUMINUM |
| FRONT TIRES: 295/75R22.5 | | REAR TIRES: 295/75R22.5 | |

ADDITIONAL TIRE DETAIL
FRONT L TIRE MADE BY LAND GOLDEN. FRONT R TIRE MADE BY ROAD LUX. REAR TIRES MADE BY PEARLY

GENERAL OBSERVATIONS

| | | | |
|------------------------|-----------|-------------------------|-----------|
| OIL MILKY? | NO | LIGHTS WORK? | SEE NOTES |
| OIL LEAKS? | YES | WIPERS WORK? | SEE NOTES |
| WATER LEAKS? | NO | GAUGES WORK? | SEE NOTES |
| OIL IN COOLANT? | NO | AIR HORN WORKS? | SEE NOTES |
| CLUTCH PLAY? | NA | CITY HORN WORKS? | SEE NOTES |
| STARTS? | SEE NOTES | | |

| | |
|--------|-----------|
| DRIVES | SEE NOTES |
|--------|-----------|

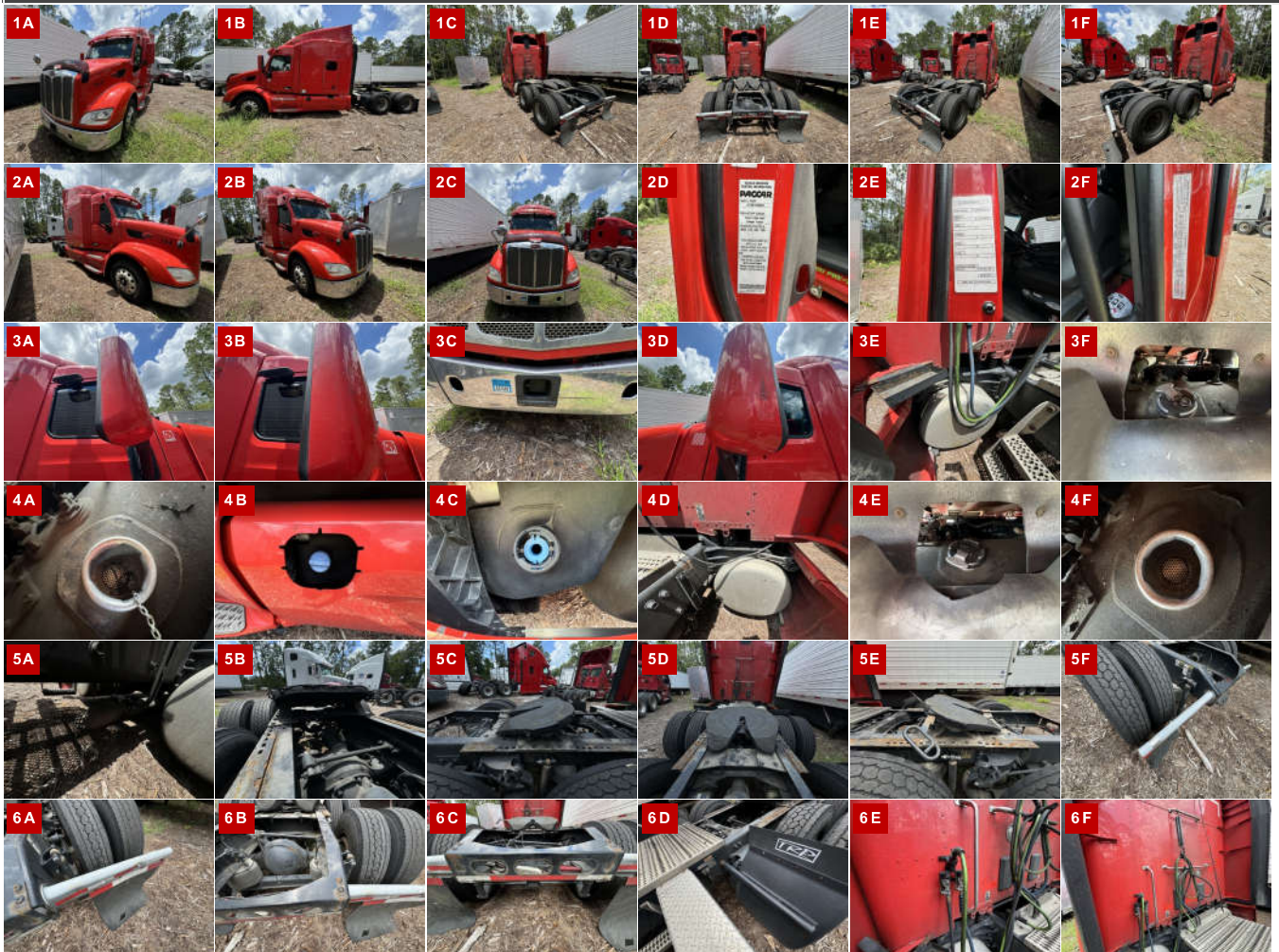
ADDITIONAL OBSERVATIONS

ENGINE OIL PAN IS LEAKING AND DRAIN PLUG

WEAR & TEAR DETAIL

| | |
|----------------------------|---|
| DIAGNOSTICS | NO POWER COULD NOT RUN OR ALL CHECK FUNCTIONS |
| LIGHTS | TAIL LIGHTS HANGING IN REAR |
| SEAT | DRIVER SEAT RIPPED |
| MIRROR | SIDE MIRROR SCRATCHED ON BOTH SIDES |
| MUD FLAPS | BOTH ARE DAMAGED |
| STEERING WHEEL | SURFACES HAVE WEAR |
| INTERIOR DOOR PANEL | D/S HAS WEAR AND STAINING , P/S HAS WEAR AND STAINING |
| SEATS | BOTH ARE SHOWING WEAR. P/S HAS DAMAGE TO THE SEAT |
| HEADLINER | STAINED IN VARIOUS AREAS |
| DASH | HOLES DRILLED IN CENTER OF DASH |
| COOLANT | ANTIFREEZE BOTTLE ATTACHED TO THE CORE SUPPORT STRUT ON D/S |
| POWER STEERING | RESIVOIR CAP TAPED TO TANK |
| FAIRINGS | MOLDING FOR DEF TANK OPENING MISSING. |
| CAB EXTENSIONS | BOTH SIDES ARE BENT |
| TIRES | 3 TIRES UNDER 10/32 |

REPORT PHOTOS







Condition report only. National Inspection Services does not guarantee mechanical reliability.

© National Inspection Services
101 W. Shrader St. Liberty, MO 64068
www.nationalinspect.com