



**Commercial Credit Group, Inc (Mark Wenzel)**  
525 N Tryon Street, Charlotte, NC 28202 USA  
(704) 414-2456

VIN: 3AKJGEDV0GSHC5167  
PO #: 15036

**2016 FREIGHTLINER CASCADIA 125**

SPECIFICATIONS	
MILEAGE	190,999 / 500,403 (ECM)
ENGINE HOURS	18,317
ENGINE	DETROIT DD13 12.8L 450 HP
ENG BRAKE	YES
ENG SERIAL	471927S0389435
FUEL / TANKS	DIESEL - 1 ALUM 150 GAL TOTAL
EXHAUST	SINGLE
TRANSMISSION	EATON-FULLER FRW-15210B 10 SPD MANUAL
DRIVE OPTS	POWER STEERING, CRUISE
REAR END	DETROIT 2.53
AXLE TYPE	TANDEM - F 12,000 LB / R 40,000 LB
GVWR	52,000
FRAME	STEEL
SUSPENSION	AIR RIDE
WHEELBASE	172"
TIRE SIZE	295/75/22.5
WHEELS	F ALUMINUM / R ALUMINUM
WHEEL 5TH	AIR SLIDE
AIR COND	YES, OPERATIONAL
INTERIOR COLOR	GREY
RADIO	AM/FM, OPERATIONAL
MIRRORS	DUAL POWER
HIGH BACK SEATS	DUAL
PASSENGER SEAT	STATIONARY
EXTERIOR COLOR	WHITE
BUMPER	PLASTIC
EXTERIOR OPTS	HEATED MIRRORS, FULL FAIRINGS



BRAKES	
<b>LEFT FRONT</b>	<b>RIGHT FRONT</b>
21	21
<b>LEFT REAR 1</b>	<b>RIGHT REAR 1</b>
16	15
<b>LEFT REAR 2</b>	<b>RIGHT REAR 2</b>
16	16

TIRES & WHEELS			
<b>LEFT FRONT</b>		<b>RIGHT FRONT</b>	
18 / 32 ALUMINUM		15 / 32 ALUMINUM	
<b>LEFT OUTER 1</b>	<b>LEFT INNER 1</b>	<b>RIGHT INNER 1</b>	<b>RIGHT OUTER 1</b>
7 / 32 GOODYEAR ALUMINUM	7 / 32 GOODYEAR ALUMINUM	7 / 32 GOODYEAR ALUMINUM	7 / 32 GOODYEAR ALUMINUM
<b>LEFT OUTER 2</b>	<b>LEFT INNER 2</b>	<b>RIGHT INNER 2</b>	<b>RIGHT OUTER 2</b>
7 / 32 GOODYEAR ALUMINUM	2 / 32 GOODYEAR ALUMINUM	20 / 32 GOODYEAR ALUMINUM	17 / 32 GOODYEAR ALUMINUM
<b>FRONT TIRES: 295/75/22.5</b>		<b>REAR TIRES: 295/75/22.5</b>	

**GENERAL OBSERVATIONS**

<b>OIL MILKY?</b>	NO	<b>LIGHTS WORK?</b>	YES - ALL
<b>OIL LEAKS?</b>	YES	<b>WIPERS WORK?</b>	YES
<b>WATER LEAKS?</b>	NO	<b>GAUGES WORK?</b>	YES - ALL
<b>OIL IN COOLANT?</b>	NO	<b>AIR HORN WORKS?</b>	YES
<b>CLUTCH PLAY?</b>	OK	<b>CITY HORN WORKS?</b>	YES
<b>STARTS?</b>	YES		
<b>DRIVES</b>	YES	<b>DIESEL PARTICULATE FILTER</b>	<b>PASS</b>

ADDITIONAL OBSERVATIONS

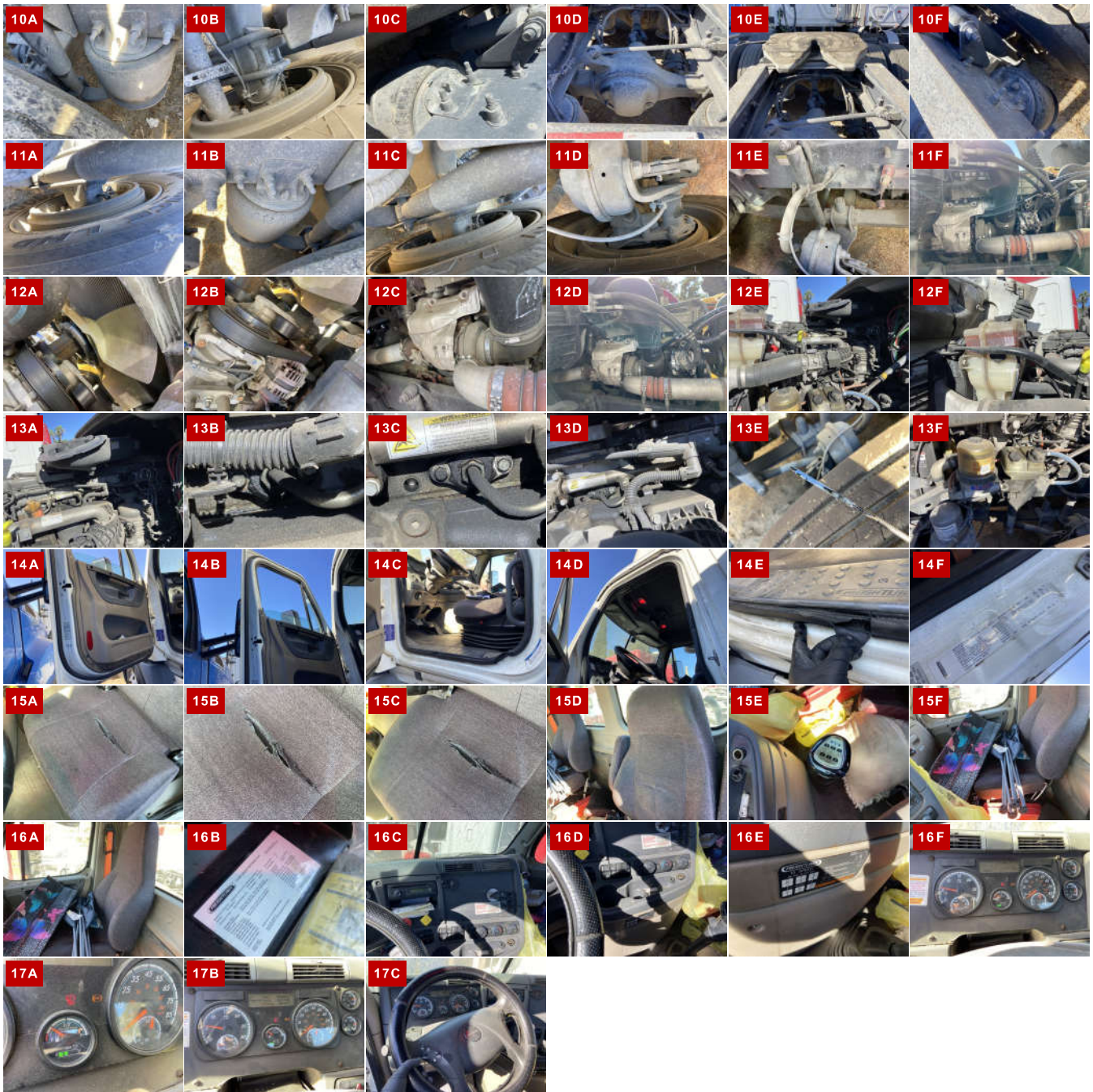
OIL LEAKS FROM THE FRONT ENGINE SEAL AND THE OIL PAN.

WEAR & TEAR DETAIL

<b>DIAGNOSTIC</b>	ABS LIGHTS ARE ON. 2 ACTIVE FAULTS / 17 INACTIVE FAULTS FOUND - (SEE ECM REPORT)
<b>FUEL RAIL</b>	LEAKS FROM FUEL RAIL LEFT SIDE OF ENGINE
<b>BUMPER</b>	HELD TOGETHER WITH ZIP TIES ON THE RIGHT SIDE.
<b>MUD FLAPS</b>	THE LEFT MUDFLAP BRACKET IS BENT BACKWARDS ON THE END AREA, THE RIGHT REAR MUDFLAP IS TORN.
<b>DRIVER SEAT</b>	UPHOLSTERY TORN.
<b>DRIVER DOOR SEAL</b>	TORN NEAR THE FLOOR AREA.
<b>TIRES</b>	6 TIRES WORN BELOW 10/32.

REPORT PHOTOS





REPORT DOCUMENTS

Condition report only. National Inspection Services does not guarantee mechanical reliability.

© National Inspection Services  
101 W. Shrader St. Liberty, MO 64068  
[www.nationalinspect.com](http://www.nationalinspect.com)