



**Commercial Credit Group, Inc (Mark Wenzel)**  
525 N Tryon Street, Charlotte, NC 28202 USA  
(704) 414-2456

VIN: 3AKJGEBG4HSJA7899  
PO #: 15037

**2017 FREIGHTLINER CASCADIA 125 T/A**

SPECIFICATIONS	
MILEAGE	447,306 / 447,308 (ECM)
ENGINE HOURS	13,641
ENGINE	CUMMINS ISX 400ST 400 HP
ENG BRAKE	YES
ENG SERIAL	79938147
FUEL / TANKS	DIESEL - 2 ALUM 200 GAL TOTAL
EXHAUST	SINGLE
TRANSMISSION	EATON-FULLER FRM-15210B 10 SPD MANUAL
DRIVE OPTS	POWER STEERING, CRUISE
REAR END	MERITOR 2.64
AXLE TYPE	TANDEM - F 12,000 LB / R 40,000 LB
GVWR	52,000
FRAME	STEEL
SUSPENSION	AIR RIDE
WHEELBASE	178"
TIRE SIZE	295/75/22.5
WHEELS	F ALUMINUM / R ALUMINUM
WHEEL 5TH	AIR SLIDE
AIR COND	YES, OPERATIONAL
INTERIOR COLOR	GREY
RADIO	AM/FM / CD, OPERATIONAL
MIRRORS	DUAL POWER
HIGH BACK SEATS	DUAL
PASSENGER SEAT	STATIONARY
EXTERIOR COLOR	WHITE
BUMPER	PLASTIC
EXTERIOR OPTS	HEATED MIRRORS, FULL FAIRINGS



BRAKES	
<b>LEFT FRONT</b>	<b>RIGHT FRONT</b>
18	18
<b>LEFT REAR 1</b>	<b>RIGHT REAR 1</b>
13	12
<b>LEFT REAR 2</b>	<b>RIGHT REAR 2</b>
14	13

TIRES & WHEELS			
<b>LEFT FRONT</b>		<b>RIGHT FRONT</b>	
17 / 32 ALUMINUM		18 / 32 ALUMINUM	
<b>LEFT OUTER 1</b>	<b>LEFT INNER 1</b>	<b>RIGHT INNER 1</b>	<b>RIGHT OUTER 1</b>
17 / 32 - ALUMINUM	17 / 32 - ALUMINUM	16 / 32 - ALUMINUM	16 / 32 - ALUMINUM
<b>LEFT OUTER 2</b>	<b>LEFT INNER 2</b>	<b>RIGHT INNER 2</b>	<b>RIGHT OUTER 2</b>
16 / 32 - ALUMINUM	16 / 32 - ALUMINUM	16 / 32 - ALUMINUM	10 / 32 - ALUMINUM
<b>FRONT TIRES: 295/75/22.5</b>		<b>REAR TIRES: 295/75/22.5</b>	

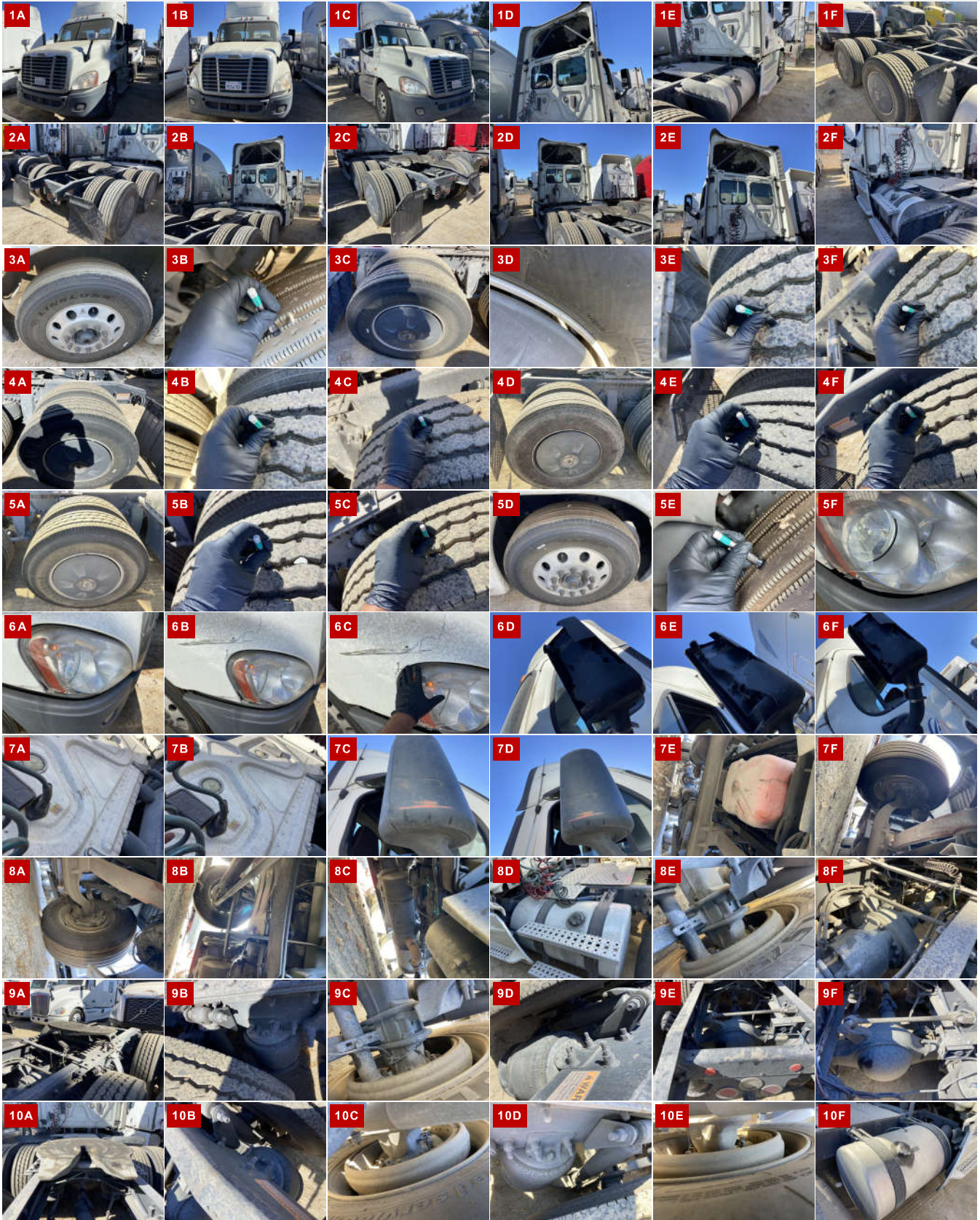
**GENERAL OBSERVATIONS**

<b>OIL MILKY?</b>	NO	<b>LIGHTS WORK?</b>	YES - ALL
<b>OIL LEAKS?</b>	NO	<b>WIPERS WORK?</b>	YES
<b>WATER LEAKS?</b>	NO	<b>GAUGES WORK?</b>	YES - ALL
<b>OIL IN COOLANT?</b>	NO	<b>AIR HORN WORKS?</b>	YES
<b>CLUTCH PLAY?</b>	OK	<b>CITY HORN WORKS?</b>	YES
<b>STARTS?</b>	YES		
<b>DRIVES</b>	YES	<b>DIESEL PARTICULATE FILTER</b>	<b>PASS</b>

WEAR & TEAR DETAIL

<b>DIAGNOSTIC</b>	CHECK ENGINE AND STOP ENGINE LIGHTS ARE ON. 1 ACTIVE FAULT / 19 INACTIVE FAULTS FOUND - (SEE ECM REPORT)
<b>DRIVER DOOR SEAL</b>	TORN NEAR THE FLOOR AREA.
<b>HEADLIGHTS</b>	RIGHT HEADLIGHT LENS BROKEN.
<b>HOOD</b>	THE HOOD IS HEAVILY CRACKED ON THE RIGHT SIDE ABOVE THE HEADLIGHT.
<b>MIRRORS</b>	LEFT MIRROR HOUSING COMPLETELY CRACKED.

REPORT PHOTOS





REPORT DOCUMENTS

Condition report only. National Inspection Services does not guarantee mechanical reliability.

© National Inspection Services  
101 W. Shrader St. Liberty, MO 64068  
[www.nationalinspect.com](http://www.nationalinspect.com)