



Commercial Credit Group, Inc (Mark Wenzel)
525 N Tryon Street, Charlotte, NC 28202 USA
(704) 414-2456

VIN: 3HAMMMML5JL426655
PO #: 15091

2018 INTERNATIONAL 4300

SPECIFICATIONS	
MILEAGE	314,902 / 314,903 (ECM)
ENGINE HOURS	9,162
ENGINE	CUMMINS B6.7L 240 HP
ENG BRAKE	NO
ENG SERIAL	74139287
FUEL / TANKS	DIESEL - 2 ALUM 140 GAL TOTAL
TRANSMISSION	EATON EDCO-6F107A-P 7 SPD AUTO
DRIVE OPTS	POWER STEERING, OVERDRIVE, CRUISE
REAR END	MERITOR 5.29
AXLE TYPE	SINGLE - F 10,000 LB / R 17,500 LB
GVWR	25,999
FRAME	STEEL
SUSPENSION	AIR RIDE
TIRE SIZE	11R22.5
WHEELS	F STEEL / R STEEL
REAR D TYPE	ROLL-UP
LIFT GATE MAKE	MAXON
LIFT GATE MODEL	GPT
LIFT GATE CAPAC (LBS)	2500
INTERIOR H (IN)	103
EXTERIOR H (IN)	160
EXTERIOR W (IN)	102
EXTERIOR L (FT)	26.0
AIR COND	YES, OPERATIONAL
INTERIOR COLOR	GRAY
RADIO	AM/FM, OPERATIONAL
HIGH BACK SEATS	DUAL
PASSENGER SEAT	STATIONARY
EXTERIOR COLOR	WHITE
BUMPER	PAINTED
EXTERIOR OPTS	HEATED MIRRORS
COLLISION AVOIDANCE?	NO



BRAKES	
LEFT FRONT	RIGHT FRONT
COVERED	COVERED
LEFT REAR 1	RIGHT REAR 1
COVERED	COVERED

TIRES & WHEELS			
LEFT FRONT		RIGHT FRONT	
17 / 32 MICHELIN STEEL		13 / 32 MICHELIN STEEL	
LEFT OUTER 1	LEFT INNER 1	RIGHT INNER 1	RIGHT OUTER 1
19 / 32 FIRESTONE STEEL	19 / 32 FIRESTONE STEEL	16 / 32 CONTINENTAL STEEL	16 / 32 CONTINENTAL STEEL
FRONT TIRES: 11R22.5		REAR TIRES: 11R22.5	

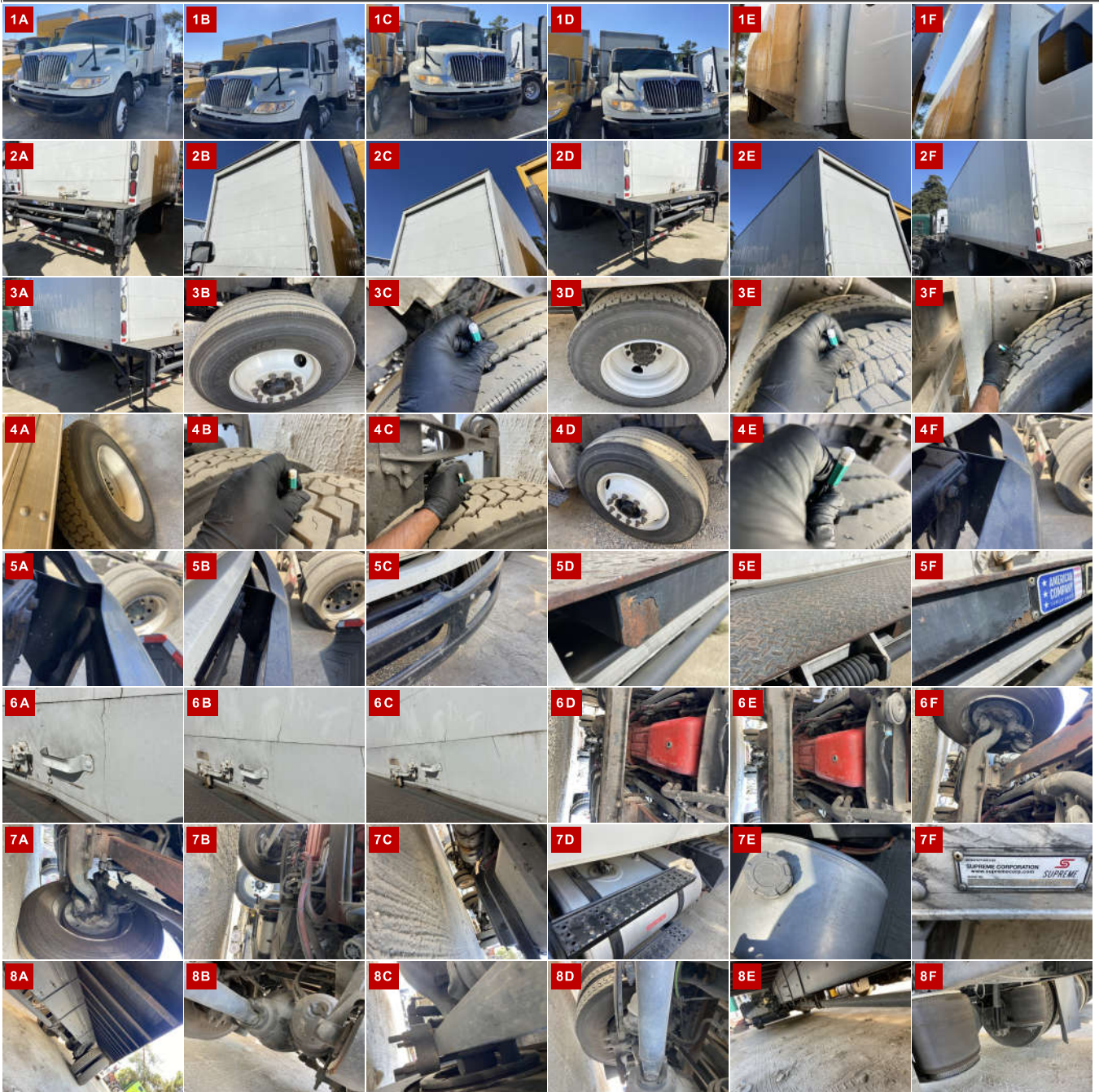
GENERAL OBSERVATIONS

OIL MILKY?	NO	LIGHTS WORK?	YES - ALL
OIL LEAKS?	NO	WIPERS WORK?	YES
WATER LEAKS?	NO	GAUGES WORK?	YES - ALL
OIL IN COOLANT ?	NO	AIR HORN WORKS?	NA
CLUTCH PLAY?	NA	CITY HORN WORKS?	YES
STARTS?	YES		
DRIVES	YES	DIESEL PARTICULATE FILTER	DASS

WEAR & TEAR DETAIL

DIAGNOSTICS	0 ACTIVE / 10 INACTIVE FAULTS - SEE REPORT
HOOD	PAINT CHIPS AROUND GRILLE / HEADLIGHTS
FRONT BUMPER	PAINT CHIPS / PEELING / LS BENT
MIRRORS	LS HOOD SPOT MIRROR MISSING
SHOCKS	BOTH DRIVE AXLE SHOCKS SHOWING RESIDUE / LEAKAGE
BOX EXTERIOR	LS REAR ENTRY GRAB HANDLE BENT
BOX INTERIOR	WALLS HAVE SCRATCHES / SCUFF MARKS
REAR DOOR	TWO LOWER PANELS CRACKED
SEATS	BOTH SIDES BOTTOM WORN / STAINED - REAR SEAT REMOVED / SITTING IN BOX
STEERING WHEEL	WORN AROUND THE EDGES

REPORT PHOTOS







REPORT DOCUMENTS

Condition report only. National Inspection Services does not guarantee mechanical reliability.

© National Inspection Services
101 W. Shrader St. Liberty, MO 64068
www.nationalinspect.com