



Commercial Credit Group, Inc (Mark Wenzel)
525 N Tryon Street, Charlotte, NC 28202 USA
(704) 414-2456

VIN: 1FVACXC7EHFP0647
PO #: 15096

2014 FREIGHTLINER M2

SPECIFICATIONS	
MILEAGE	173,210
ENGINE	CUMMINS ISB 6.7L 220 HP
FUEL / TANKS	DIESEL - 1 ALUM 50 GAL TOTAL
TRANSMISSION	ALLISON 2500 RDS 6 SPD AUTO
DRIVE OPTS	POWER STEERING, OVERDRIVE, CRUISE
REAR END	MERITOR 5.57
AXLE TYPE	SINGLE - F 12,000 LB / R 21,000 LB
GVWR	33,000
FRAME	STEEL
SUSPENSION	AIR RIDE
WHEELBASE	240"
TIRE SIZE	11R22.5
WHEELS	F ALUMINUM / R ALUMINUM
REAR D TYPE	ROLL-UP
R DOOR (IN X IN)	85X85
LIFT GATE MAKE	WALTCO
LIFT GATE MODEL	WDV66
LIFT GATE CAPAC (LBS)	6600
EXTERIOR W (IN)	102
EXTERIOR L (FT)	22.0
AIR COND	YES
INTERIOR COLOR	GRAY
RADIO	AM/FM / CD, OPERATIONAL
MIRRORS	DUAL POWER
HIGH BACK SEATS	DUAL
PASSENGER SEAT	AIR RIDE
EXTERIOR COLOR	WHITE
BUMPER	CHROME
EXTERIOR OPTS	HEATED MIRRORS



NOTES / DESCRIPTION

MICKEY VB220917393V13

BRAKES	
LEFT FRONT	RIGHT FRONT
COVERED	COVERED
LEFT REAR 1	RIGHT REAR 1
COVERED	COVERED

TIRES & WHEELS			
LEFT FRONT		RIGHT FRONT	
12 / 32 BRIDGESTONE ALUMINUM		12 / 32 BRIDGESTONE ALUMINUM	
LEFT OUTER 1	LEFT INNER 1	RIGHT INNER 1	RIGHT OUTER 1
7 / 32 BRIDGESTONE ALUMINUM	9 / 32 BRIDGESTONE ALUMINUM	20 / 32 BRIDGESTONE ALUMINUM	20 / 32 BRIDGESTONE ALUMINUM
FRONT TIRES: 11R22.5		REAR TIRES: 11R22.5	

GENERAL OBSERVATIONS

OIL MILKY?	NO	LIGHTS WORK?	SEE NOTES
OIL LEAKS?	NO	WIPERS WORK?	SEE NOTES
WATER LEAKS?	NO	GAUGES WORK?	SEE NOTES
OIL IN COOLANT?	NO	AIR HORN WORKS?	SEE NOTES
CLUTCH PLAY?	NA	CITY HORN WORKS?	YES
STARTS?	SEE NOTES		
DRIVES	SEE NOTES		

WEAR & TEAR DETAIL

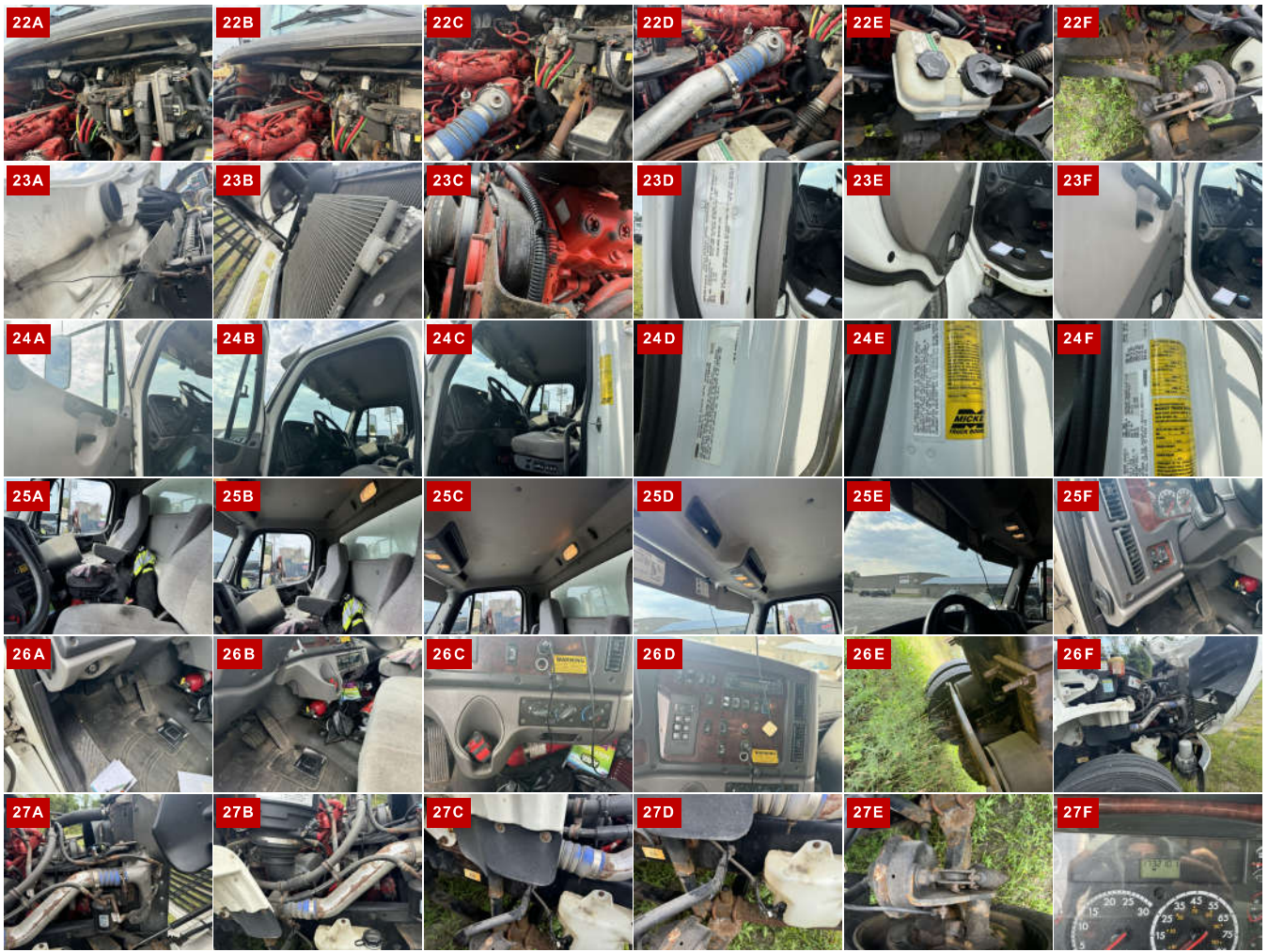
DIAGNOSTIC 1 ACTIVE FAULT / 17 INACTIVE FAULTS FOUND (SEE ECM REPORT)

DIAGNOSTIC	1 ACTIVE FAULT / 17 INACTIVE FAULTS FOUND - (SEE EGM REPORT)
KEYS	MISSING
CORROSION	PRESENT ON LOWER ALUMINUM RAIL ON VAN BOX
CHASSIS, SUSPENSION AND AXLES.	RUST IN VARIOUS LOCATIONS.
TIRES	2 TIRES WORN BELOW 10/32.

REPORT PHOTOS







REPORT DOCUMENTS

Condition report only. National Inspection Services does not guarantee mechanical reliability.

© National Inspection Services
101 W. Shrader St. Liberty, MO 64068
www.nationalinspect.com