



Commercial Credit Group, Inc (Mark Wenzel)
525 N Tryon Street, Charlotte, NC 28202 USA
(704) 414-2456

VIN: 1HT MMMML2JH629833
PO #: 15114

2018 INTERNATIONAL 4300

SPECIFICATIONS	
ENGINE	CUMMINS B 6.7 L 240 HP
ENG BRAKE	NO
FUEL / TANKS	DIESEL - 1 ALUM 70 GAL TOTAL
TRANSMISSION	ALLISON 2100HS 6 SPD AUTO
DRIVE OPTS	POWER STEERING, OVERDRIVE, CRUISE
REAR END	MERITOR 5.86
AXLE TYPE	SINGLE - F 10,000 LB / R 17,500 LB
GVWR	25,999
FRAME	STEEL
SUSPENSION	SPRING
WHEELBASE	252"
TIRE SIZE	11R 22.5
WHEELS	F STEEL / R STEEL
REAR D TYPE	ROLL-UP
R DOOR (IN X IN)	93W X 96H
LIFT GATE MAKE	MAXON
LIFT GATE MODEL	GPTRLR
LIFT GATE CAPAC (LBS)	2500
INTERIOR H (IN)	103
EXTERIOR W (IN)	102
EXTERIOR L (FT)	26.0
AIR COND	YES
INTERIOR COLOR	GREY
RADIO	AM/FM
HIGH BACK SEATS	DRIVER SIDE ONLY
PASSENGER SEAT	STATIONARY
EXTERIOR COLOR	WHITE
BUMPER	PAINTED
EXTERIOR OPTS	HEATED MIRRORS



BRAKES	
LEFT FRONT	RIGHT FRONT
19	27
LEFT REAR 1	RIGHT REAR 1
28	28

TIRES & WHEELS			
LEFT FRONT		RIGHT FRONT	
9 / 32 FALKEN STEEL		11 / 32 FALKEN STEEL	
LEFT OUTER 1	LEFT INNER 1	RIGHT INNER 1	RIGHT OUTER 1
18 / 32 - STEEL	17 / 32 FALKEN STEEL	17 / 32 MICHELIN STEEL	18 / 32 FALKEN STEEL
FRONT TIRES: 11R 22.5		REAR TIRES: 11R 22.5	

ADDITIONAL TIRE DETAIL
RLO 1 TIRE MANUFACTURER IS BLACKHAWK.

GENERAL OBSERVATIONS

OIL MILKY?	NO	LIGHTS WORK?	SEE NOTES
OIL LEAKS?	NO	WIPERS WORK?	SEE NOTES
WATER LEAKS?	NO	GAUGES WORK?	SEE NOTES
OIL IN COOLANT?	NO	AIR HORN WORKS?	SEE NOTES
CLUTCH PLAY?	NA	CITY HORN WORKS?	SEE NOTES
STARTS?	SEE NOTES		
DRIVES?	SEE NOTES		

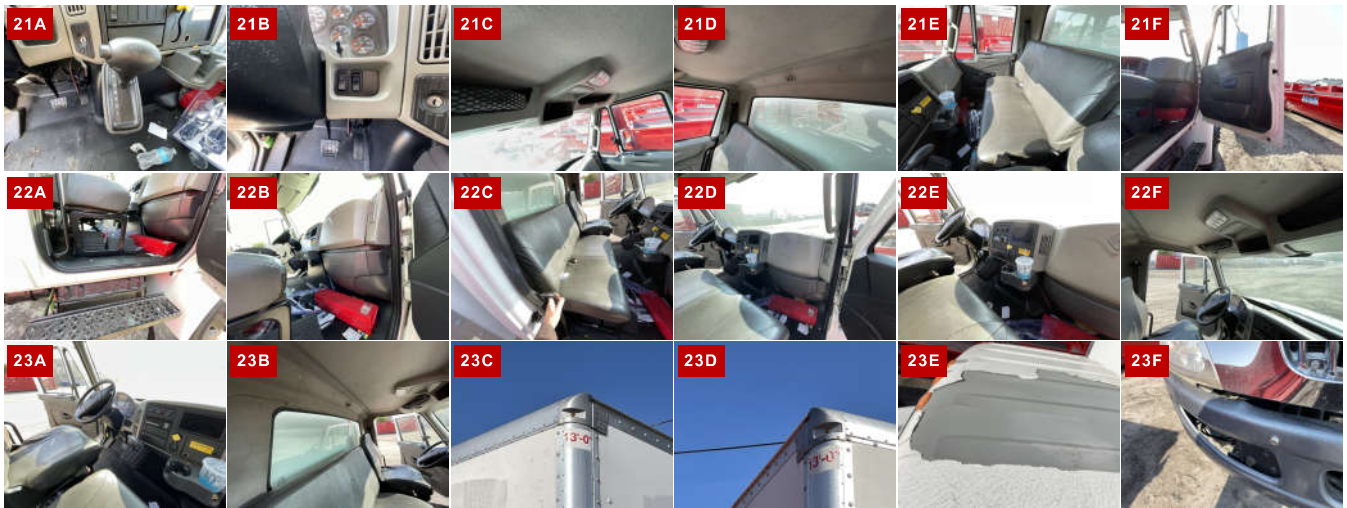
WEAR & TEAR DETAIL

DIAGNOSTICS	NO POWER COULD NOT RUN OR CHECK ALL FUNCTIONS. ATTEMPTED TO JUMP START BUT VEHICLE WOULD NOT START
BUMPER	RIGHT END OF FRONT BUMPER SLIGHTLY DAMAGED.
FRAME	MINOR RUST IN VARIOUS LOCATIONS.
CAB	PAINT PEELING FROM ROOF OF CAB.
INTERIOR BOX	SCRAPES AND RUB MARKS
TIRES	1 TIRE BELOW 10/32

REPORT PHOTOS







Condition report only. National Inspection Services does not guarantee mechanical reliability.

© National Inspection Services
101 W. Shrader St. Liberty, MO 64068
www.nationalinspect.com