



**Commercial Credit Group, Inc (Mark Wenzel)**  
525 N Tryon Street, Charlotte, NC 28202 USA  
(704) 414-2456

VIN: 1XKYDP9X6HJ145781  
PO #: 15118

**2017 KENWORTH T680**

SPECIFICATIONS	
ENGINE	PACCAR MX13 12.9L 455 HP
ENG SERIAL	Y105725
FUEL / TANKS	DIESEL - 2 ALUM 200 GAL TOTAL
EXHAUST	SINGLE
TRANSMISSION	EATON-FULLER FAO-16810S-EP3 10 SPD AUTO
DRIVE OPTS	POWER STEERING, OVERDRIVE, CRUISE
REAR END	MERITOR 2.64
AXLE TYPE	TANDEM - F 12,350 LB / R 40,000 LB
GVWR	52,350
FRAME	STEEL
SUSPENSION	AIR RIDE
WHEELBASE	228"
TIRE SIZE	295 75 22.5
WHEELS	F ALUMINUM / R ALUMINUM
WHEEL 5TH	AIR SLIDE
AIR COND	YES
SLEEPER	76"
DUAL BUNK	YES
INTERIOR COLOR	GREY
RADIO	AM/FM / CD
MIRRORS	DUAL POWER
HIGH BACK SEATS	DUAL
PASSENGER SEAT	AIR RIDE
EXTERIOR COLOR	WHITE
BUMPER	PAINTED
EXTERIOR OPTS	HEATED MIRRORS, FULL FAIRINGS



**NOTES / DESCRIPTION**

NO BATTERIES, UNABLE TO START AND TEST. ENGINE IS DISASSEMBLED, MANY PARTS ARE INSIDE ON CAB FLOOR.

BRAKES	
<b>LEFT FRONT</b>	<b>RIGHT FRONT</b>
28	28
<b>LEFT REAR 1</b>	<b>RIGHT REAR 1</b>
24	24
<b>LEFT REAR 2</b>	<b>RIGHT REAR 2</b>
26	26

TIRES & WHEELS			
<b>LEFT FRONT</b>		<b>RIGHT FRONT</b>	
13 / 32 GOODYEAR STEEL		13 / 32 GOODYEAR STEEL	
<b>LEFT OUTER 1</b>	<b>LEFT INNER 1</b>	<b>RIGHT INNER 1</b>	<b>RIGHT OUTER 1</b>
13 / 32 - STEEL	- - -	13 / 32 - STEEL	16 / 32 - STEEL
<b>LEFT OUTER 2</b>	<b>LEFT INNER 2</b>	<b>RIGHT INNER 2</b>	<b>RIGHT OUTER 2</b>
10 / 32 BRIDGESTONE STEEL	13 / 32 BRIDGESTONE STEEL	13 / 32 PIRELLI STEEL	10 / 32 PIRELLI STEEL
<b>FRONT TIRES:</b> 295 75 22.5		<b>REAR TIRES:</b> 295 75 22.5	

**GENERAL OBSERVATIONS**

<b>OIL MILKY?</b>	YES	<b>LIGHTS WORK?</b>	SEE NOTES
<b>OIL LEAKS?</b>	YES	<b>WIPERS WORK?</b>	SEE NOTES
<b>WATER LEAKS?</b>	YES	<b>GAUGES WORK?</b>	SEE NOTES
<b>OIL IN COOLANT?</b>	SEE NOTES	<b>AIR HORN WORKS?</b>	SEE NOTES
<b>CLUTCH PLAY?</b>	NA	<b>CITY HORN WORKS?</b>	SEE NOTES
<b>STARTS?</b>	SEE NOTES		
<b>DRIVES</b>	SEE NOTES		

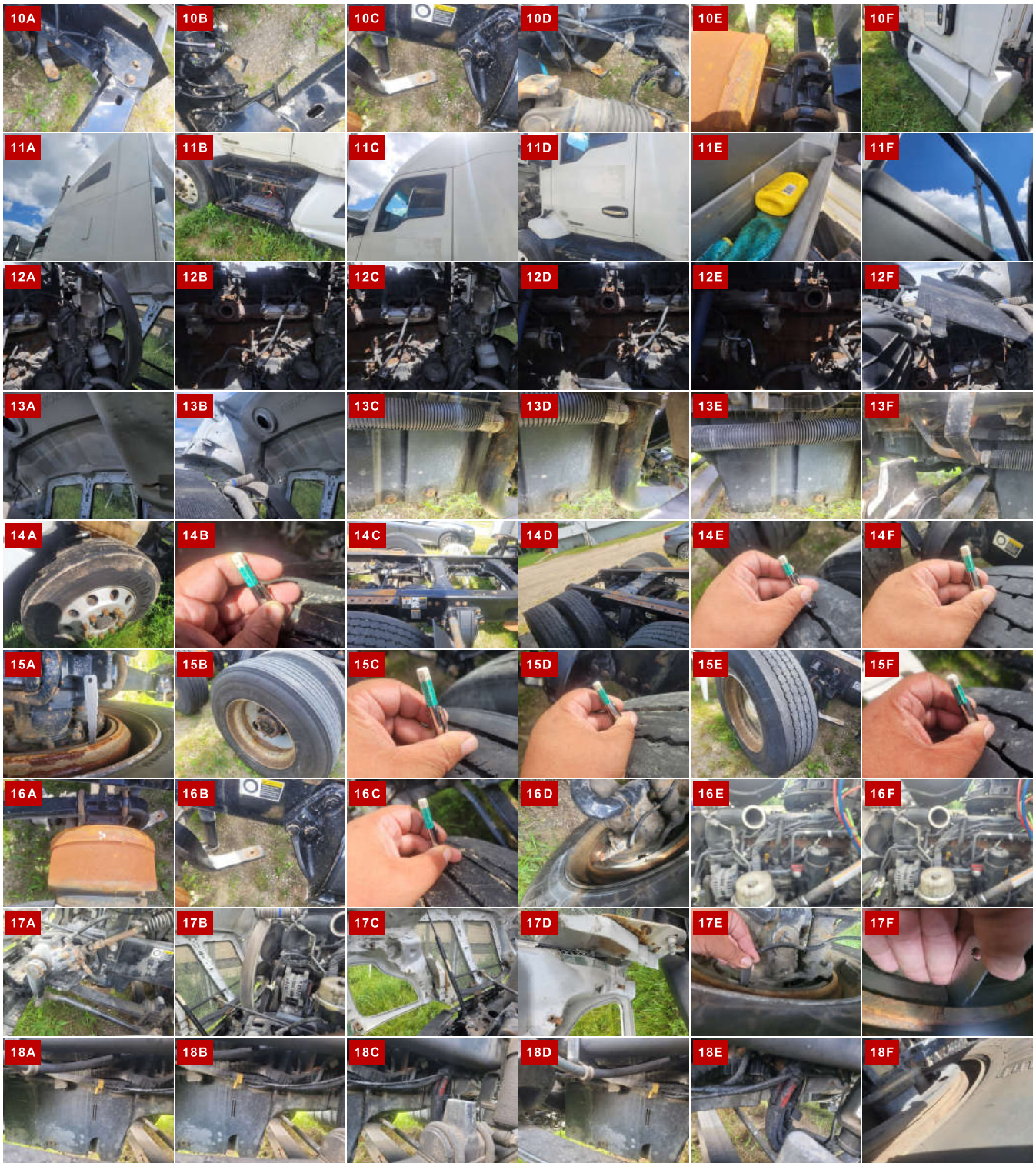
**WEAR & TEAR DETAIL**

<b>GENERAL NOTES</b>	UNIT IS INOPERABLE INSTRUCTED TO INSPECT AS IS
<b>ENGINE</b>	ENGINE IS TORN APART MANY MISSING PARTS COMPLETELY INOPERABLE
<b>INTERIOR</b>	NO INTERIOR PICS CAB IS FULL OF MISSING ENGINE PARTS
<b>HOOD</b>	CRACKS ON BOTH SIDES
<b>MIRRORS</b>	HOOD MIRRORS ARE MISSING AND BOTH SIDE MIRRORS ARE MISSING COVERS.
<b>GRILLE</b>	GRILLE IS DAMAGED ON LEFT SIDE
<b>FUEL TANK</b>	PASSENGER SIDE FUEL TANK IS MISSING
<b>FAIRINGS</b>	DRIVER SIDE STEP FAIRING IS MISSING AND PASSENGER SIDE TANK FAIRING IS MISSING.
<b>SUSPENSION</b>	AIR RIDE BAGS ARE MISSING
<b>TIRES</b>	LEFT 1ST AXLE INNER TIRE AND WHEEL ARE MISSING

**REPORT PHOTOS**







Condition report only. National Inspection Services does not guarantee mechanical reliability.

© National Inspection Services  
101 W. Shradar St. Liberty, MO 64068  
[www.nationalinspect.com](http://www.nationalinspect.com)