



Commercial Credit Group, Inc (Mark Wenzel)
525 N Tryon Street, Charlotte, NC 28202 USA
(704) 414-2456

VIN: 3ALACWFC4KDKH6725
PO #: 15142

2019 FREIGHTLINER M2

SPECIFICATIONS	
MILEAGE	299,749 / 299,750 (ECM)
ENGINE HOURS	8,469
ENGINE	CUMMINS ISB 6.7 220 HP
ENG SERIAL	74296214
FUEL / TANKS	DIESEL - 1 ALUM 100 GAL TOTAL
TRANSMISSION	ALLISON 2200 RDS 6 SPD AUTO
DRIVE OPTS	POWER STEERING, OVERDRIVE, CRUISE
REAR END	MERITOR 5.29
AXLE TYPE	SINGLE - F 10,000 LB / R 19,000 LB
GVWR	26,000
FRAME	STEEL
SUSPENSION	AIR RIDE
WHEELBASE	270"
TIRE SIZE	11R22.5
WHEELS	F ALUMINUM / R ALUMINUM
REAR D TYPE	ROLL-UP
R DOOR (IN X IN)	94W X 96H
SIDE D TYPE	SWING
LIFT GATE MAKE	MAXON
LIFT GATE MODEL	GPT
LIFT GATE CAPAC (LBS)	3000
INTERIOR H (IN)	103
EXTERIOR W (IN)	102
EXTERIOR L (FT)	26.0
AIR COND	YES, OPERATIONAL
INTERIOR COLOR	GRAY
RADIO	AM/FM, OPERATIONAL
HIGH BACK SEATS	DUAL
PASSENGER SEAT	STATIONARY
EXTERIOR COLOR	WHITE
BUMPER	PAINTED
EXTERIOR OPTS	HEATED MIRRORS



BRAKES	
LEFT FRONT	RIGHT FRONT
COVERD	COVERED
LEFT REAR 1	RIGHT REAR 1
COVERD	COVERD

TIRES & WHEELS			
LEFT FRONT		RIGHT FRONT	
10 / 32 BRIDGESTONE ALUMINUM		12 / 32 BRIDGESTONE ALUMINUM	
LEFT OUTER 1	LEFT INNER 1	RIGHT INNER 1	RIGHT OUTER 1
14 / 32 CONTINENTAL ALUMINUM	10 / 32 CONTINENTAL ALUMINUM	14 / 32 CONTINENTAL ALUMINUM	14 / 32 CONTINENTAL ALUMINUM
FRONT TIRES: 11R22.5		REAR TIRES: 11R22.5	

GENERAL OBSERVATIONS

OIL MILKY?	NO	LIGHTS WORK?	YES - ALL
OIL LEAKS?	YES	WIPERS WORK?	YES
WATER LEAKS?	NO	GAUGES WORK?	YES - ALL
OIL IN COOLANT ?	NO	AIR HORN WORKS?	YES
CLUTCH PLAY?	NA	CITY HORN WORKS?	YES
STARTS?	YES		
DRIVES	YES	DIESEL PARTICULATE FILTER	DASC

ADDITIONAL OBSERVATIONS

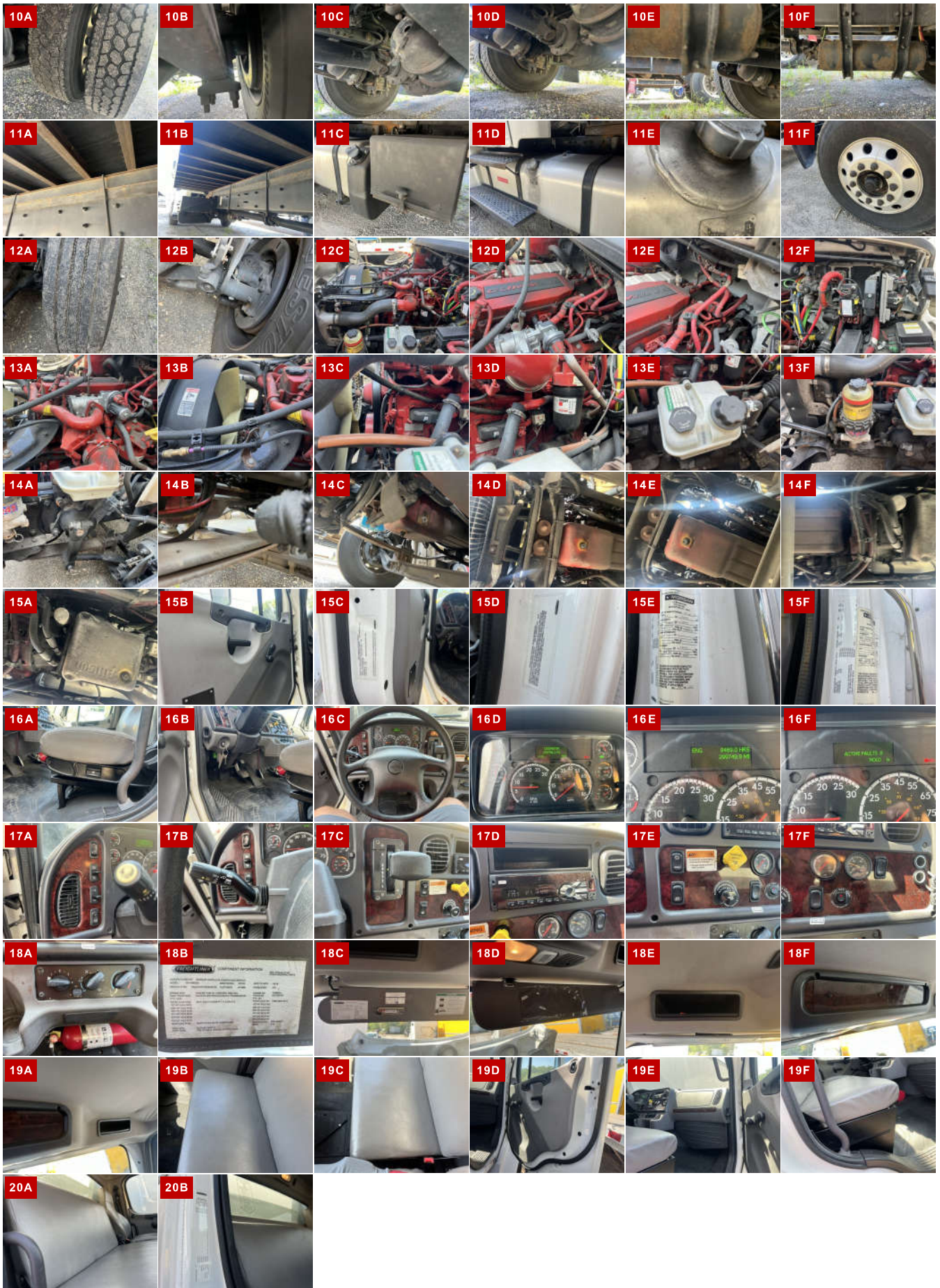
ENGINE OIL LEAK AT THE REAR OF THE OIL PAN

WEAR & TEAR DETAIL

DIAGNOSTICS	CHECK ENGINE LIGHT ILLUMINATED 18 INACTIVE FAULTS DETECTED - (SEE ECM REPORT)
COWL	BROKEN AND PULLING AWAY FROM BODY ON THE P/S
LIFTGATE	LIFTGATE DOES NOT GO UP AND DOWN. MOTOR WORKS BUT DOES NOT MOVE.
HEADLINER	STAINED IN VARIOUS AREAS FALLING DOWN IN THE CORNERS
STEERING WHEEL	SURFACES HAVE WEAR
INTERIOR BOX	SCRAPES AND RUB MARKS

REPORT PHOTOS





Condition report only. National Inspection Services does not guarantee mechanical reliability.

© National Inspection Services
101 W. Shrader St. Liberty, MO 64068
www.nationalinspect.com