



Commercial Credit Group, Inc (Mark Wenzel)
525 N Tryon Street, Charlotte, NC 28202 USA
(704) 414-2456

VIN: 3ALACWDT3HDHV3972
PO #: 15143

2017 FREIGHTLINER M2

SPECIFICATIONS	
MILEAGE	201,078 / 201,079 (ECM)
ENGINE HOURS	5,229
ENGINE	CUMMINS ISB 6.7 220 HP
ENG SERIAL	58648240
FUEL / TANKS	DIESEL - 1 ALUM 80 GAL TOTAL
TRANSMISSION	ALLISON 2200 RDS 8 SPD AUTO
DRIVE OPTS	POWER STEERING, OVERDRIVE, CRUISE
REAR END	DETROIT 5.56
AXLE TYPE	SINGLE - F 10,000 LB / R 19,000 LB
GVWR	26,000
FRAME	STEEL
SUSPENSION	AIR RIDE
WHEELBASE	270"
TIRE SIZE	11R22.5
WHEELS	F ALUMINUM / R ALUMINUM
REAR D TYPE	ROLL-UP
R DOOR (IN X IN)	94W X 96H
LIFT GATE MAKE	PALFINGER
LIFT GATE CAPAC (LBS)	3300
INTERIOR H (IN)	102
EXTERIOR W (IN)	102
EXTERIOR L (FT)	26.0
AIR COND	YES, OPERATIONAL
INTERIOR COLOR	GRAY
RADIO	AM/FM, OPERATIONAL
HIGH BACK SEATS	DUAL
PASSENGER SEAT	STATIONARY
EXTERIOR COLOR	YELLOW
BUMPER	PAINTED
EXTERIOR OPTS	HEATED MIRRORS



BRAKES	
LEFT FRONT	RIGHT FRONT
COVERED	COVERED
LEFT REAR 1	RIGHT REAR 1
COVERED	COVERED

TIRES & WHEELS			
LEFT FRONT		RIGHT FRONT	
11 / 32 BRIDGESTONE ALUMINUM		12 / 32 BRIDGESTONE ALUMINUM	
LEFT OUTER 1	LEFT INNER 1	RIGHT INNER 1	RIGHT OUTER 1
13 / 32 CONTINENTAL ALUMINUM	13 / 32 CONTINENTAL ALUMINUM	14 / 32 BRIDGESTONE ALUMINUM	14 / 32 BRIDGESTONE ALUMINUM
FRONT TIRES: 11R22.5		REAR TIRES: 11R22.5	

GENERAL OBSERVATIONS

OIL MILKY?	NO	LIGHTS WORK?	YES - ALL
OIL LEAKS?	NO	WIPERS WORK?	YES
WATER LEAKS?	NO	GAUGES WORK?	YES - ALL
OIL IN COOLANT?	NO	AIR HORN WORKS?	YES
CLUTCH PLAY?	NA	CITY HORN WORKS?	YES
STARTS?	YES		
DRIVES	YES	DIESEL PARTICULATE FILTER	FAIL

ADDITIONAL OBSERVATIONS

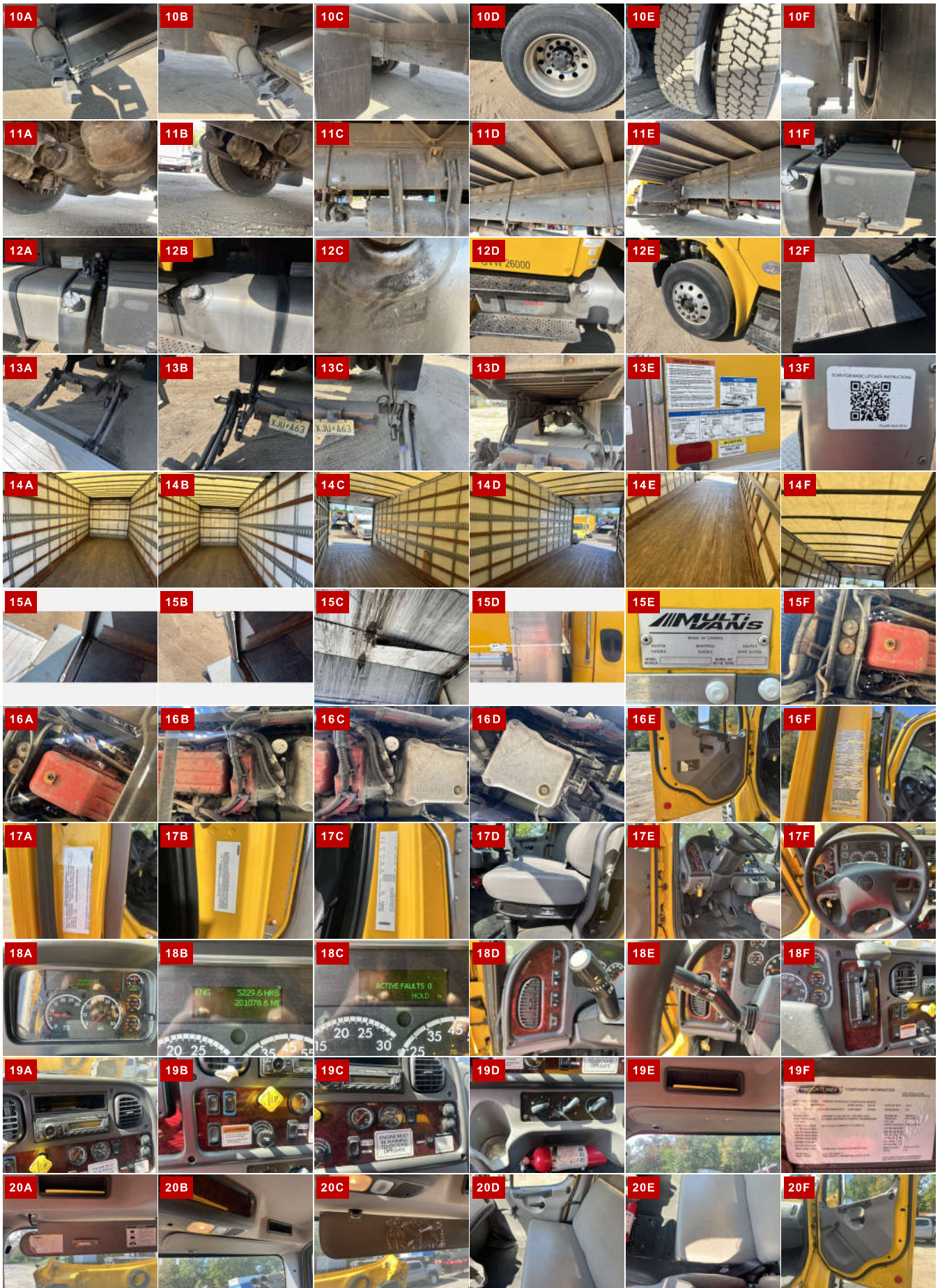
ACTIVE AFTERTREATMENT FAULT

WEAR & TEAR DETAIL

DIAGNOSTICS	2 ACTIVE / 31 INACTIVE FAULTS DETECTED - (SEE ECM REPORT)
HOOD	HOOD HAS DAMAGE BY DRIVER SIDE OF GRILLE
REAR DOOR	INSIDE OF DOOR PANEL BREAKING AWAY.
BODY	BODY HAS LIGHT SCRATCHES ABND BLEMISHES THROUGHOUT

REPORT PHOTOS







REPORT DOCUMENTS

Condition report only. National Inspection Services does not guarantee mechanical reliability.

© National Inspection Services
101 W. Shrader St. Liberty, MO 64068
www.nationalinspect.com