



Commercial Credit Group, Inc (Mark Wenzel)
525 N Tryon Street, Charlotte, NC 28202 USA
(704) 414-2456

VIN: 1FDWE3FS4KDC15555
PO #: 15144

2019 FORD E350

SPECIFICATIONS	
MILEAGE	81,416
ENGINE	FORD 6.8L EFI TRITON V10 305 HP
FUEL / TANKS	GASOLINE - 1 STEEL 55 GAL TOTAL
TRANSMISSION	FORD 6R140 6 SPD AUTO
DRIVE OPTS	POWER STEERING, OVERDRIVE, CRUISE
REAR END	4.56
AXLE TYPE	SINGLE - F 4,050 LB / R 8,500 LB
GVWR	12,500
FRAME	STEEL
SUSPENSION	SPRING
WHEELBASE	176"
TIRE SIZE	235 65R 16C
WHEELS	F STEEL / R STEEL
REAR D TYPE	ROLL-UP
R DOOR (IN X IN)	88X72
EXTERIOR W (IN)	96
EXTERIOR L (FT)	16.0
AIR COND	YES, OPERATIONAL
INTERIOR COLOR	GRAY
RADIO	AM/FM, OPERATIONAL
HIGH BACK SEATS	DUAL
PASSENGER SEAT	STATIONARY
EXTERIOR COLOR	YELLOW
BUMPER	PAINTED



BRAKES	
LEFT FRONT	RIGHT FRONT
DISC	DISC
LEFT REAR 1	RIGHT REAR 1
COVERED	COVERED

ADDITIONAL BRAKE DETAIL
DISC BRAKES

TIRES & WHEELS			
LEFT FRONT		RIGHT FRONT	
11 / 32 FIRESTONE STEEL		11 / 32 FIRESTONE STEEL	
LEFT OUTER 1	LEFT INNER 1	RIGHT INNER 1	RIGHT OUTER 1
11 / 32 FIRESTONE STEEL	10 / 32 FIRESTONE STEEL	8 / 32 FIRESTONE STEEL	11 / 32 FIRESTONE STEEL
FRONT TIRES: 235 65R 16C		REAR TIRES: 235 65R 16C	

GENERAL OBSERVATIONS

OIL MILKY?	NO	LIGHTS WORK?	YES - ALL
OIL LEAKS?	NO	WIPERS WORK?	YES
WATER LEAKS?	NO	GAUGES WORK?	YES - ALL
OIL IN COOLANT?	NO	AIR HORN WORKS?	NA
CLUTCH PLAY?	NA	CITY HORN WORKS?	YES
STARTS?	YES		
DRIVES	YES		

WEAR & TEAR DETAIL

DIAGNOSTICS	3 ACTIVE FAULTS FOUND - (SEE ECM REPORT)
PAINT	VARIOUS CHIPS AND SCRATCHES
BODY	SCRAPED AND SCRATCHED ON BOTH SIDES
SEAT	SHOWING SIGNS OF SLIGHT WEAR

WALKBOARD

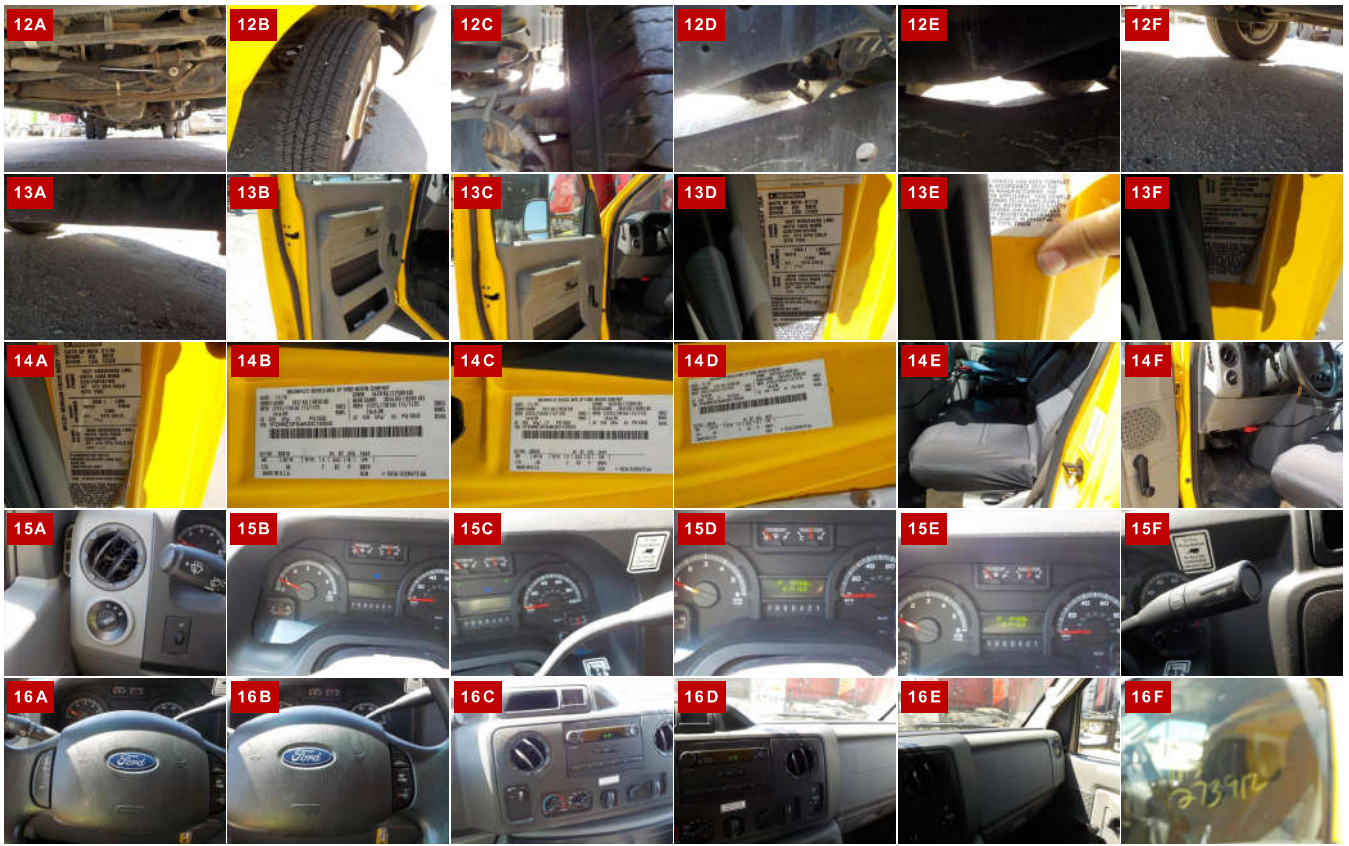
INSTALLED

TIRES

1 WORN BELOW 10/32.

REPORT PHOTOS





REPORT DOCUMENTS

Condition report only. National Inspection Services does not guarantee mechanical reliability.

© National Inspection Services
101 W. Shrader St. Liberty, MO 64068
www.nationalinspect.com