



Commercial Credit Group, Inc (Mark Wenzel)
525 N Tryon Street, Charlotte, NC 28202 USA
(704) 414-2456

VIN: 1XKYD49X9LJ344721
PO #: 15207

2020 KENWORTH T680

SPECIFICATIONS	
MILEAGE	532,615 / 532,616 (ECM)
ENGINE HOURS	12,825
ENGINE	CUMMINS X15 14.9L 450 HP
ENG BRAKE	YES
ENG SERIAL	80135044
FUEL / TANKS	DIESEL - 2 ALUM 240 GAL TOTAL
EXHAUST	HORIZONTAL
TRANSMISSION	EATON FAOM-15810S-EC3 10 SPD AUTO
DRIVE OPTS	POWER STEERING, OVERDRIVE, CRUISE
REAR END	MERITOR 2.79
AXLE TYPE	TANDEM - F 14,320 LB / R 40,000 LB
GVWR	54,320
FRAME	STEEL
SUSPENSION	AIR RIDE
WHEELBASE	229"
TIRE SIZE	295 75R 22.5
WHEELS	F ALUMINUM / R ALUM/STEEL
WHEEL 5TH	AIR SLIDE
AIR COND	YES, OPERATIONAL
AUX POWER UNIT?	YES
SLEEPER	76"
DUAL BUNK	YES
INTERIOR COLOR	GRAY
RADIO	AM/FM, OPERATIONAL
MIRRORS	DUAL POWER
HIGH BACK SEATS	DUAL
PASSENGER SEAT	AIR RIDE
EXTERIOR COLOR	BLACK
BUMPER	PAINTED
EXTERIOR OPTS	HEATED MIRRORS, FULL FAIRINGS
COLLISION AVOIDANCE?	YES



BRAKES	
LEFT FRONT	RIGHT FRONT
16	16
LEFT REAR 1	RIGHT REAR 1
17	16
LEFT REAR 2	RIGHT REAR 2
16	15

TIRES & WHEELS			
LEFT FRONT		RIGHT FRONT	
18 / 32 ALUMINUM		16 / 32 FALKEN ALUMINUM	
LEFT OUTER 1	LEFT INNER 1	RIGHT INNER 1	RIGHT OUTER 1
22 / 32 - ALUMINUM	22 / 32 - STEEL	22 / 32 - STEEL	22 / 32 - ALUMINUM
LEFT OUTER 2	LEFT INNER 2	RIGHT INNER 2	RIGHT OUTER 2
22 / 32 - ALUMINUM	21 / 32 - STEEL	20 / 32 - STEEL	20 / 32 - ALUMINUM
FRONT TIRES: 295 75R 22.5		REAR TIRES: 295 75R 22.5	

ADDITIONAL TIRE DETAIL
MIXED BRANDS - RECAPS ON REAR - LF EVOLUXX

GENERAL OBSERVATIONS			
OIL MILKY?	NO	LIGHTS WORK?	YES - ALL
OIL LEAKS?	NO	WIPERS WORK?	YES

WATER LEAKS?	NO	GAUGES WORK?	YES - ALL
OIL IN COOLANT?	NO	AIR HORN WORKS?	YES
CLUTCH PLAY?	NA	CITY HORN WORKS?	YES
STARTS?	YES		
DRIVES	YES	DIESEL PARTICULATE FILTER	FAIL

ADDITIONAL OBSERVATIONS

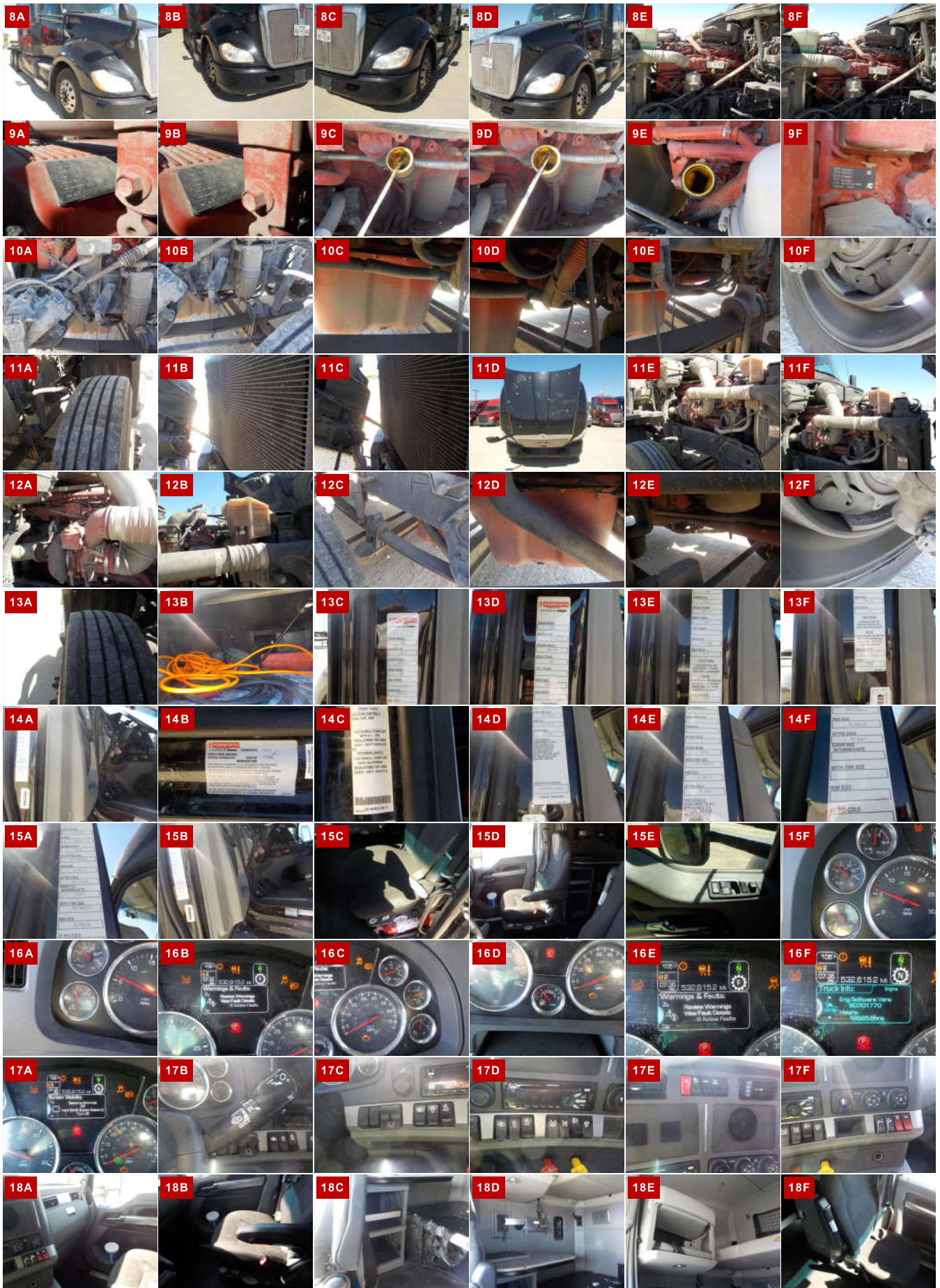
DPF FAIL: SPN 4375 FMI 2 - AFT 1 SCR CATALYST REAGENT PUMP DRIVE PERCENTAGE.

WEAR & TEAR DETAIL

DIAGNOSTICS	TRACTION CONTROL, TIRE PRESSURE AND HILL ASSIST LIGHTS ARE ON. 9 ACTIVE AND 16 INACTIVE CODES - SEE ATTACHED REPORT
PAINT	VARIOUS CHIPS AND SCRATCHES
FUEL TANK	RIGHT SIDE CAP MISSING
APU	CRANKS WILL NOT START
SEATS	SHOWING SIGNS OF WEAR
WINDSHIELD	CRACKED AND STONE CHIPPED
CAB/SLEEPER	NEEDS CLEANING AND DETAIL

REPORT PHOTOS







REPORT DOCUMENTS

Condition report only. National Inspection Services does not guarantee mechanical reliability.

© National Inspection Services
101 W. Shrader St. Liberty, MO 64068
www.nationalinspect.com