



Commercial Credit Group, Inc (Mark Wenzel)
 525 N Tryon Street, Charlotte, NC 28202 USA
 (704) 414-2456

VIN: 3AKJHHR7JSJR1269
 PO #: 15410

2018 FREIGHTLINER CASCADIA

SPECIFICATIONS	
MILEAGE	588,711
ENGINE HOURS	20,708
ENGINE	DETROIT DD15 14.8L 455 HP
ENG BRAKE	YES
ENG SERIAL	472910S0493958
FUEL / TANKS	DIESEL - 2 ALUM 160 GAL TOTAL
EXHAUST	HORIZONTAL
TRANSMISSION	DETROIT DT12-1650-OH1 HD 12 SPD AUTO
DRIVE OPTS	POWER STEERING, OVERDRIVE, CRUISE
REAR END	DETROIT 3.08
AXLE TYPE	TANDEM - F 12,350 LB / R 40,000 LB
GVWR	52,350
FRAME	STEEL
SUSPENSION	AIR RIDE
WHEELBASE	229"
TIRE SIZE	11R22.5
WHEELS	F STEEL / R STEEL
WHEEL 5TH	AIR SLIDE
AIR COND	YES, NOT OPERATIONAL
AUX POWER UNIT?	NO
SLEEPER	72"
DUAL BUNK	YES
INTERIOR COLOR	BLACK / GRAY
RADIO	AM/FM, NOT OPERATIONAL
MIRRORS	DUAL POWER
HIGH BACK SEATS	DUAL
PASSENGER SEAT	AIR RIDE
EXTERIOR COLOR	WHITE
BUMPER	PLASTIC
EXTERIOR OPTS	HEATED MIRRORS, FULL FAIRINGS
COLLISION AVOIDANCE?	YES



BRAKES	
LEFT FRONT	RIGHT FRONT
DISC	DISC
LEFT REAR 1	RIGHT REAR 1
DISC	DISC
LEFT REAR 2	RIGHT REAR 2
DISC	DISC

TIRES & WHEELS			
LEFT FRONT		RIGHT FRONT	
12 / 32 BRIDGESTONE STEEL		13 / 32 BRIDGESTONE STEEL	
LEFT OUTER 1	LEFT INNER 1	RIGHT INNER 1	RIGHT OUTER 1
11 / 32 BRIDGESTONE STEEL	10 / 32 BRIDGESTONE STEEL	10 / 32 BRIDGESTONE STEEL	10 / 32 BRIDGESTONE STEEL
LEFT OUTER 2	LEFT INNER 2	RIGHT INNER 2	RIGHT OUTER 2
9 / 32 CONTINENTAL STEEL	10 / 32 CONTINENTAL STEEL	10 / 32 BRIDGESTONE STEEL	10 / 32 GENERAL STEEL
FRONT TIRES: 11R22.5		REAR TIRES: 11R22.5	

GENERAL OBSERVATIONS

OIL MILKY?	NO	LIGHTS WORK?	YES - ALL
OIL LEAKS?	SEE NOTES	WIPERS WORK?	NO
WATER LEAKS?	NO	GAUGES WORK?	YES - ALL

CLUTCH PLAY?	NA	CITY HORN WORKS?	YES
STARTS?	NO		
DRIVES	NO		

ADDITIONAL OBSERVATIONS

BATTERIES ARE WEAK / WILL NOT CRANK / UNABLE TO OBTAIN DATA OR REPORT / INSPECTED AS IS - OIL RESIDUE / SEEPAGE AROUND OIL PAN SEAL

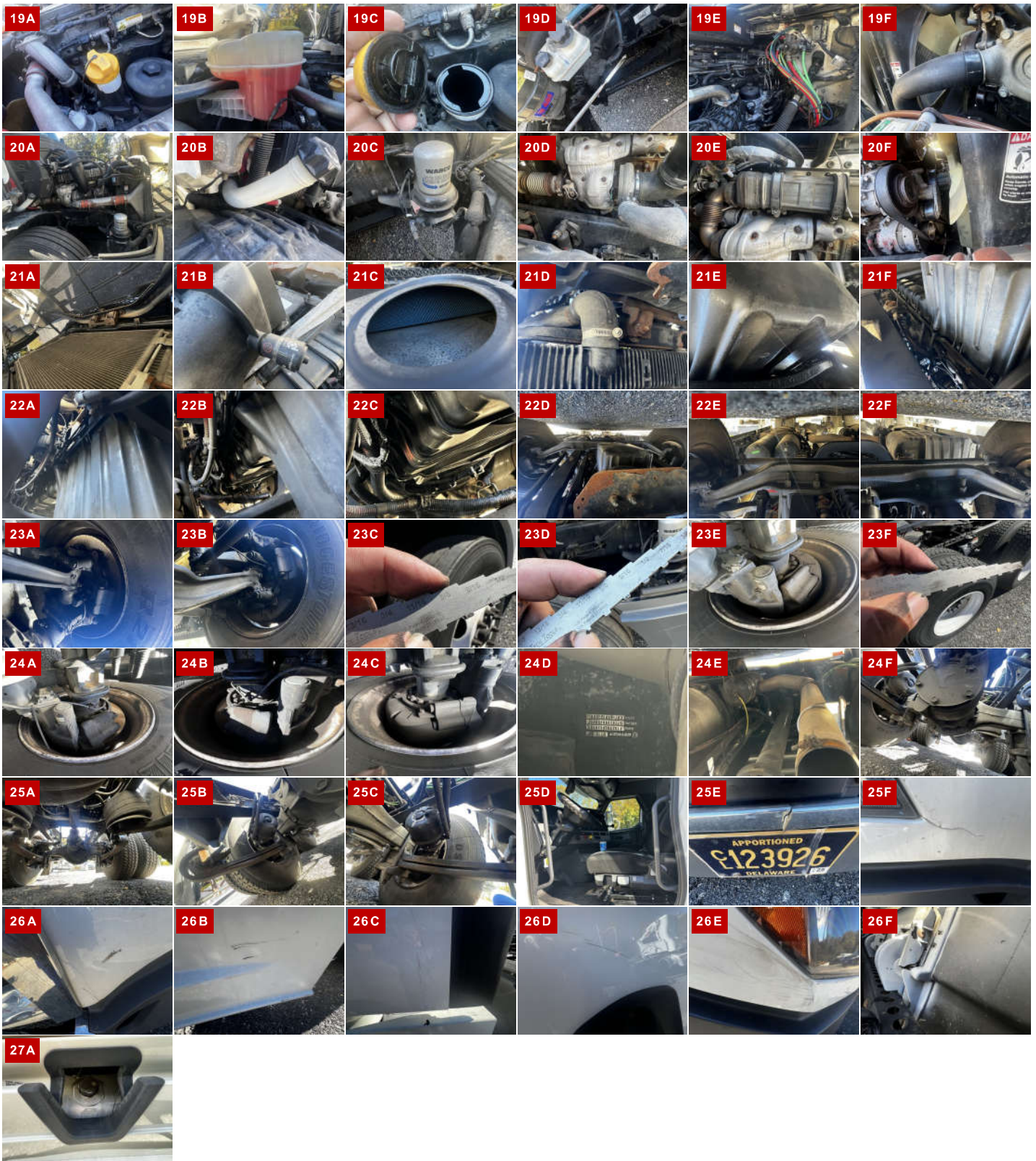
WEAR & TEAR DETAIL

STARTING SYSTEM	BATTERIES WEAK. WILL NOT START. UNABLE TO PERFORM DIAGNOSTICS. UNABLE TO BUILD AND CHECK AIR PRESSURE. HAD ENOUGH POWER TO CHECK LIGHTS.AND PULL SOME DIAGNOSTICS FROM DASH.
TIRES	ONE TIRE BELOW 10/32
AXLES	OIL RESIDUE / BUILD UP AROUND INPUT SHAFT SEAL ON FRONT DIFFERENTIAL
ENGINE	COOLANT LEVEL LOW
HOOD	PAINT CHIPS AROUND GRILLE / HEADLIGHTS - RS FIBERGLASS CRACKED NEAR HEADLIGHT - LS FIBERGLASS CRACKED NEAR GRILLE - LS SCRATCHED AROUND SPOT MIRROR BASE
CAB FAIRINGS	LS LOWER FAIRING SCRATCHED NEAR BOTTOM EDGE
TANK FAIRINGS	LS SCRATCHED NEAR THE REAR - RS INNER BRACKET BROKEN
SEATS	LS BOTTOM WORN / STAINED
STEREO	INOPERABLE
BUNK	TOP MATTRESS MISSING

REPORT PHOTOS







Condition report only. National Inspection Services does not guarantee mechanical reliability.

© National Inspection Services
101 W. Shrader St. Liberty, MO 64068
www.nationalinspect.com